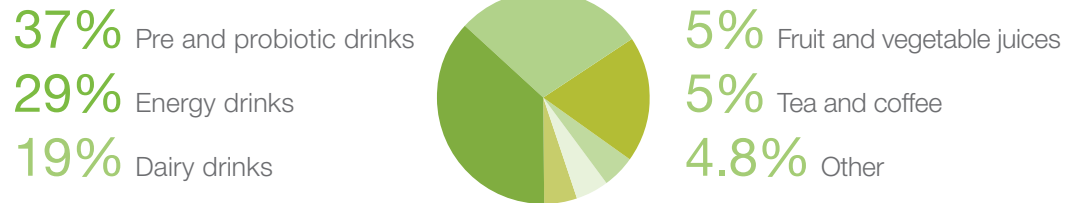




## Innovative Testing Solutions for Your Most Pressing Concerns

- Help ensure quality and safety
- Find rapid and reliable testing essentials
- Meet regulatory requirements
- Avoid supply chain gaps with choice and convenience

The North American functional beverage market is expected to exceed **\$44 million** by 2025 and will require additional life sciences-based quality control and safety testing to keep consumers safe.<sup>1</sup>



North America leads the global food and beverage market and is expected to grow to over **\$93 million** at a CAGR of

**7.8%** from 2022 to 2025<sup>2</sup>

By **2025**, the global beverage additives market is expected to be worth

**\$11 million**<sup>3</sup>

## Confidence at Every Step

Beverage Quality Testing Solutions to Satisfy Evolving Tastes

Access over **1.7 million** food and beverage testing products, including chemicals, equipment, consumables, and more, from close to **6,500** suppliers.

The CBD-infused beverage market is evolving and diversifying and is expected to reach **\$1.7 billion** in the U.S. by 2025.<sup>4</sup>



# Confidence at Every Step

Beverage Quality Testing Solutions  
to Satisfy Evolving Tastes



Cytiva Whatman™ filtration products bring **efficiency and accuracy** to food and beverage testing. By standardizing and streamlining lab workflows and reducing the number of filtration devices required, they deliver reliable results to assure consistency and safety.



## Reduced Filtration Times

### Cytiva Whatman Grade 2V Qualitative Filter Papers

Avoid interference from gas bubbles in your colorimetric analysis. These pre-pleated cellulose filters have been shown to remove over 77% of CO<sub>2</sub> from filtered samples.



## Ready to Use

### Cytiva Whatman Grade 934-AH RTU Glass Microfiber Filters

Quickly clarify aqueous solutions gravimetrically. These pre-weighed filters save you time when processing heavily turbid samples and retain fine particles as small as 1.5 µm.



## Require Less Hand Pressure

### Cytiva Whatman GD/X Nylon Syringe Filters

Filter even the most difficult samples with less hand pressure. GD/X filters are designed with glass microfiber prefilters to help prevent clogged membranes and back pressure for better loading capacity and fast flow rates.



## Simplify Determination and Enumeration

### Cytiva Whatman MicroPlus Membranes

Use these sterile mixed cellulose ester (MCE) membranes for sample preparation, microbiological studies, and aqueous solution filtration. They feature narrow pore size distribution, low extractables levels, and increased temperature stability.

Browse our full collection of beverage testing products at [fishersci.com/food-beverage-testing](https://fishersci.com/food-beverage-testing) and [fishersci.ca/food-beverage-testing](https://fishersci.ca/food-beverage-testing).

1. Functional Foods and Beverages: Global Markets, BBC Research (2020, December), page 94. <https://www.bccresearch.com/market-research/food-and-beverage/functional-food-market.html>
2. Functional Foods and Beverages: Global Markets, BBC Research (2020, December), page 86. <https://www.bccresearch.com/market-research/food-and-beverage/functional-food-market.html>
3. Global Market for Food Additives, BBC Research (2021, May), page 22. <https://www.bccresearch.com/market-research/food-and-beverage/food-additives-market.html>
4. Cannabis: CBD-infused Beverages: Looking at the sector's next frontier, Credit Suisse Equity Research (2019, December 5).

Distributed by Fisher Scientific. Contact us today:

#### In the United States

Order online: [fishersci.com](https://fishersci.com)

Call customer service: 1-800-766-7000

#### In Canada

Order online: [fishersci.ca](https://fishersci.ca)

Call customer service: 1-800-234-7437

