

SOCOREX®

ACURA® MANUAL PIPETTES



**DURAN
WHEATON
KIMBLE**

Excellence in your hands

f **fisher scientific**
part of Thermo Fisher Scientific

Acura® manual Pipettes

The Socorex® complete line of liquid handling products offers your lab a single source for superior quality pipettes, tips and accessories. Socorex pipettes which are manufactured in Switzerland are available exclusively by DWK Life Sciences (June 1st, 2017 WHEATON Inc was renamed to DWK Life Sciences) in the United States. Socorex *manual* pipettes meet and exceed users' needs for precision, accuracy and affordability. The Acura 825 and 835 are classic manual pipettes for all applications; the Acura 826 XS is the newest, light weight pipette designed intentionally to be shorter in length to facilitate working in small microtubes. In addition, all Acura *manual* pipettes are designed with optimal ergonomics to help prevent repetitive stress injuries. Specifically, the Acura 826 XS features an ultra-soft plunger which greatly reduces thumb and hand fatigue from long hours of pipetting.

Acura® manual 825

Product Advantages

- Smart and reliable volume adjustment
- Single-handed volume setting
- Precision digital display visible at all times
- Justip™ adjustable tip ejector* fitting most tips
- Swift-set user calibration system*
- Shock, UV-light and autoclaving resistance
- CE Certified IVD 98/79 EEC

* Socorex patented



825

- 0.1 - 2µL
- 0.5 - 10µL
- 1 - 10µL
- 2 - 20µL
- 5 - 50µL
- 10 - 100µL
- 20 - 200µL
- 100 - 1000µL



Acura® manual 826 XS

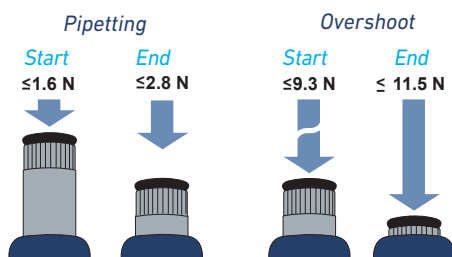
Product Advantages

- Excellent ergonomic shape and size ratio
- New springs and tightness seal for extra-smooth activation
- Reduced weight - lighter than leading brands
- Increased drivability with short, narrow shaft
- Easier to use when working in a fume hood
- Conical shaft end for easy reach in smaller microtubes



826 XS

- 0.1 - 2µL
- 0.5 - 10µL
- 1 - 10µL
- 2 - 20µL
- 5 - 50µL
- 10 - 100µL
- 20 - 200µL
- 100 - 1000µL



1 Newton (N) ~ 0.1 kilogram force (kgf)

Extra Smooth Activation

- Unique tightness lip seal and new springs provide for ultra-soft pipetting, reducing hand fatigue while working.
- Forces measured on a 20 - 200µL model, are indicative of very limited finger efforts. Yet, the overshoot stop offers a clear tactile indicator.

Acura® manual Pipettes

Most Comfortable Pipetting 1

The Acura® manual fits everybody's hand with or without glove. Ergonomic shape, light weight and soft plunger travel care for better comfort.



Ejector Button 2

Ergonomically positioned, the large surface, soft padded ejector provides for low-pressure activation.



Adjustable Tip Ejection 3 4

Ejector shaft height adjustment system called Justip™ allows a wide selection of tips to tightly fit the nozzle.



Minimum Maintenance / Sterilization 5

Easy disassembling for thorough cleaning. Sterilization achieved by auto-claving instrument fully assembled (121°C / 250°F).



Instant Calibration 6 7

Swift-set user calibration system - with integrated key and locking mechanism - makes tedious procedures a thing of the past. Easy and precise, it is in full compliance with international standards and recommendations.



Safety Seal 8

Though easily removed when needed, the switch protection seal is autoclaving resistant.



NEW! Acura® manual 826 XS Pipette Starter Kit (W810200-XS)

Four pipettes, 4 racks of tips plus a stand

Special low price; Ideal for new labs!

(see back cover for a complete list of contents)

Calibration Seal Stickers

Cat. No.	Description	Qty/Case
W810620	Replacement seals	25
W810622	Replacement seals	100

Performance and Ordering Information - Acura® manual 825 and 826 XS Micropipettes

Cat. No.	Volume	Division	Inaccuracy (E%)			Imprecision (CV%)			Weight (g)	Tip Style
			Min. Vol.	Mid. Vol.	Max. Vol.	Min. Vol.	Mid. Vol.	Max. Vol.		
Acura 825										
13-709-32	0.1 - 2µL	0.002µL	< ± 6.0 % ¹⁾	< ± 4.0 %	< ± 2.0 %	< 5.0 % ¹⁾	< 3.3 %	< 1.5 %	88	Ultra 10µL
13-709-33	0.5 - 10µL	0.01µL	< ± 2.5 % ²⁾	< ± 1.8 %	< ± 1.0 %	< 1.8 % ²⁾	< 1.2 %	< 0.5 %	88	Ultra 10µL
13-709-34	1 - 10µL	0.01µL	< ± 2.5 %	< ± 1.8 %	< ± 1.0 %	< 2.5 %	< 1.6 %	< 0.7 %	88	200µL
13-709-35	2 - 20µL	0.02µL	< ± 2.5 %	< ± 1.8 %	< ± 1.0 %	< 1.7 %	< 1.1 %	< 0.5 %	88	200µL
13-709-36	5 - 50µL	0.1µL	< ± 1.5 %	< ± 1.3 %	< ± 1.0 %	< 1.0 %	< 0.7 %	< 0.4 %	90	200µL
13-709-37	10 - 100µL	0.1µL	< ± 1.5 %	< ± 1.2 %	< ± 0.8 %	< 1.0 %	< 0.6 %	< 0.2 %	92	200µL
13-709-38	20 - 200µL	0.2µL	< ± 1.5 %	< ± 1.1 %	< ± 0.6 %	< 0.6 %	< 0.4 %	< 0.2 %	90	200µL
13-709-39	100 - 1000µL	1µL	< ± 1.5 %	< ± 1.0 %	< ± 0.5 %	< 0.5 %	< 0.4 %	< 0.2 %	95	1000µL
Acura 826 XS										
13-709-401	0.1 - 2µL	0.002µL	< ± 6.0 % ¹⁾	< ± 4.0 %	< ± 2.0 %	< 5.0 % ¹⁾	< 3.3 %	< 1.5 %	84	Ultra 10µL
13-709-402	0.5 - 10µL	0.01µL	< ± 2.5 % ²⁾	< ± 1.8 %	< ± 1.0 %	< 1.8 % ²⁾	< 1.2 %	< 0.5 %	84	Ultra 10µL
13-709-403	1 - 10µL	0.01µL	< ± 2.5 %	< ± 1.8 %	< ± 1.0 %	< 2.5 %	< 1.6 %	< 0.7 %	85	200µL
13-709-404	2 - 20µL	0.02µL	< ± 2.5 %	< ± 1.8 %	< ± 1.0 %	< 1.7 %	< 1.1 %	< 0.5 %	85	200µL
13-709-405	5 - 50µL	0.1µL	< ± 1.5 %	< ± 1.3 %	< ± 1.0 %	< 1.0 %	< 0.7 %	< 0.4 %	86	200µL
13-709-406	10 - 100µL	0.1µL	< ± 1.5 %	< ± 1.2 %	< ± 0.8 %	< 1.0 %	< 0.6 %	< 0.2 %	87	200µL
13-709-407	20 - 200µL	0.2µL	< ± 1.5 %	< ± 1.1 %	< ± 0.6 %	< 0.6 %	< 0.4 %	< 0.2 %	86	200µL
13-709-408	100 - 1000µL	1µL	< ± 1.5 %	< ± 1.0 %	< ± 0.5 %	< 0.5 %	< 0.4 %	< 0.2 %	88	1000µL

Performance values obtained with double-distilled water at constant temperature (± 0.5°C) comprised between 20°C and 25°C in accordance with ISO 8655.

¹⁾ measured at 0.5µL ²⁾ measured at 1µL

Fixed Volume Pipettes available at www.wheaton.com

Acura® manual Pipettes

Acura® manual 835 Macropipettes

Instruments combining high-tech materials with user-friendly ergonomics. Optimal for indoor and outdoor environmental analysis, clinical chemistry and cell culture applications, they offer superior performance and make pipetting safer than ever.

Product Advantages

- Smart and reliable volume adjustment
- Single-handed volume setting
- Interchangeable nozzle protection filter
- Justip™ adjustable tip ejector* fitting most tips
- Swift-set user calibration system*
- Shock, UV-light and autoclaving resistance
- Pasteur pipette fitting 2 and 5mL models

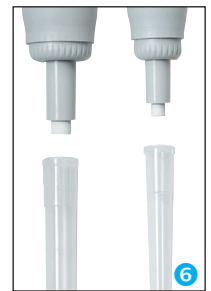
* Socorex patented

835

0.2 - 2mL

0.5 - 5mL

1 - 10mL



Display Always Visible 1

Located on the front of the instrument, the display window allows set volume to be visible at all times during pipetting. A comforting reassurance for the user.

Smart and Reliable Volume Adjustment 2

State-of-the-art micrometric volume setting is performed smoothly and precisely by turning push button. Finely machined click-stops and free rotating cap prevent any unwanted volume alteration.

Patented Tip Ejection System 3 4

Ergonomically positioned, the large surface, soft padded ejector provides for low-pressure activation. In addition, the shaft height adjustment system called Justip™ allows optimal distance setting between ejector and tip.

Pasteur Pipette Adapter 5

Adapter nozzles allow fitting of Pasteur pipette on Acura® manual 2 and 5mL models in addition to polypropylene tips. The adapters have two O-rings guaranteeing proper holding and tightness of standard 2mL Pasteur pipettes (Ø 7mm).

Nozzle Protection Filter 6

Protection against liquid overflow and contamination.

Performance and Ordering Information - Acura® manual 835 Macropipettes

Cat. No.	Volume	Division	Inaccuracy (E%)			Imprecision (CV%)			Tip Style
			Min. Vol.	Mid. Vol.	Max. Vol.	Min. Vol.	Mid. Vol.	Max. Vol.	
13-709-909	0.2 - 2mL	0.002mL	< ± 1.5 %	< ± 1.0 %	< ± 0.5 %	< 0.5 %	< 0.3 %	< 0.2 %	2mL
13-709-40	0.5 - 5mL	0.01mL	< ± 1.5 %	< ± 1.1 %	< ± 0.6 %	< 0.6 %	< 0.5 %	< 0.3 %	5mL
13-709-41	1 - 10mL	0.01mL	< ± 1.5 %	< ± 0.7 %	< ± 0.5 %	< 0.5 %	< 0.3 %	< 0.2 %	10mL

Performance values obtained with double-distilled water at constant temperature (± 0.5°C) comprised between 20°C and 25°C in accordance with ISO 8655.

Fixed Volume Pipettes available at www.wheaton.com

Acura® manual Pipettes

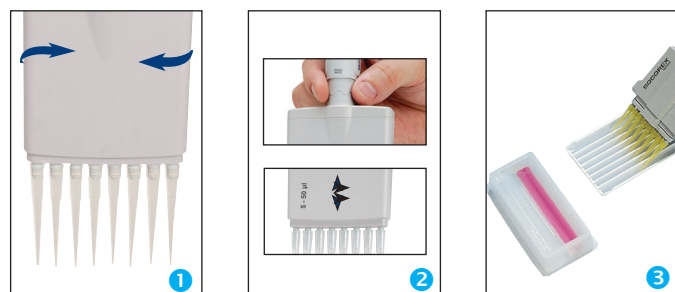
Acura® manual 855 Multichannel Pipette

Built with the users in mind, these pipettes combine high-tech materials with exceptional, user-friendly ergonomics. They extend pipetting possibilities in 96-well microplates and guarantee outstanding performance and results.

Product Advantages

- 8 and 12-channel models up to 350µL
- Light weight and perfect hand fitting
- Precision digital display visible at all time
- Justip™ adjustable tip ejector* fitting most tips
- Swift-set user calibration system*
- 360° rotation of volumetric module

* Socorex patented



Optimal Working Position 1

Revolving over 360°, the volumetric module (lower assembly) helps reach the appropriate hand position.

Adjustable Tip Ejector 2

Position of tip ejector can be adjusted in no time within a 4mm span to perfectly match with tips used. Bowed shape of ejector head guarantees effortless, easy sequential tip removal.

Multichannel Reservoirs 3

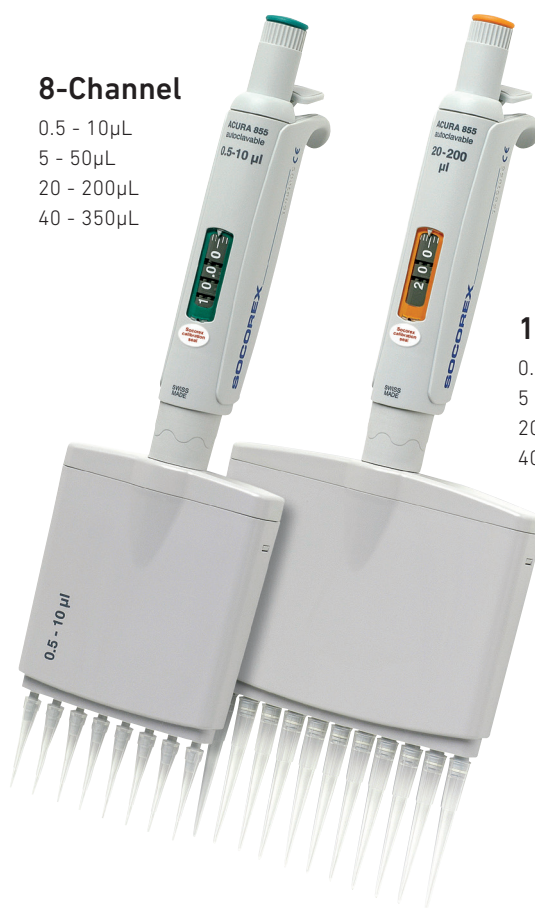
Well adapted for multichannel pipettes, the reagent reservoirs offer various shapes and volumes.

8-Channel

- 0.5 - 10µL
- 5 - 50µL
- 20 - 200µL
- 40 - 350µL

12-Channel

- 0.5 - 10µL
- 5 - 50µL
- 20 - 200µL
- 40 - 350µL



Performance and Ordering Information - Acura® manual 855 Multichannel Pipettes

Cat. No.	Volume	Division	Min. Vol.	Inaccuracy (E%)			Imprecision (CV%)			Weight (g)	Tip Style
				Mid. Vol.	Max. Vol.	Min. Vol.	Mid. Vol.	Max. Vol.			
8-Channel											
13-709-42	0.5 - 10µL	0.01µL	< ± 3.5 % ¹⁾	< ± 2.5 %	< ± 1.5 %	< 3.0 % ¹⁾	< 2.0 %	< 1.0 %	155	Ultra 10µL	
13-709-43	5 - 50µL	0.1µL	< ± 1.0 %	< ± 0.9 %	< ± 0.8 %	< 1.0 %	< 0.7 %	< 0.4 %	165	200µL	
13-709-52	20 - 200µL	0.2µL	< ± 0.9 %	< ± 0.8 %	< ± 0.7 %	< 0.6 %	< 0.5 %	< 0.3 %	165	200µL	
13-709-44	40 - 350µL	0.4µL	< ± 1.0 %	< ± 0.9 %	< ± 0.8 %	< 0.6 %	< 0.5 %	< 0.3 %	168	350µL	
12-Channel											
13-709-45	0.5 - 10µL	0.01µL	< ± 3.5 % ¹⁾	< ± 2.5 %	< ± 1.5 %	< 3.0 % ¹⁾	< 2.0 %	< 1.0 %	184	Ultra 10µL	
13-709-46	5 - 50µL	0.1µL	< ± 1.0 %	< ± 0.9 %	< ± 0.8 %	< 1.0 %	< 0.7 %	< 0.4 %	199	200µL	
02-912-670	20 - 200µL	0.2µL	< ± 0.9 %	< ± 0.8 %	< ± 0.7 %	< 0.6 %	< 0.5 %	< 0.3 %	201	200µL	
13-709-47	40 - 350µL	0.4µL	< ± 1.0 %	< ± 0.9 %	< ± 0.8 %	< 0.6 %	< 0.5 %	< 0.3 %	203	350µL	

Performance values obtained with double-distilled water at constant temperature (± 0.5°C) comprised between 20°C and 25°C in accordance with ISO 8655.

¹⁾ measured at 1µL

Acura® manual Pipette Accessories

Smartie Caps - Color Coding for Easy Identification



All Acura® pipettes have color-coded button caps for individual, lab or department identifications. Pick among 14 colors or choose the smartie mix for other color combinations.

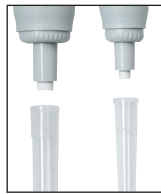
Cat. No.	Color	Cat. No.	Color
Smarties Button Caps (6/pack)			
13-709-56	White	13-709-63	Rose
13-709-57	Grey	13-709-64	Pink
13-709-58	Vanilla	13-709-65	Purple
13-709-59	Lemon	13-709-66	Ice Blue
13-709-60	Yellow	13-709-67	Blue
13-709-61	Orange	13-709-68	Mint
13-709-62	Red	13-709-69	Green
Smartie Assortment (14/pack)			
13-709-70	Assorted colors (one of each above)		

Twister™ Pipette Stand, Model 336



Cat. No.	Color	Qty / Pack
13-709-79	Blue	1
13-709-80	Green	1
13-709-81	Orange	1
13-709-82	Grey	1
13-709-83	Red	1
13-709-84	White	1
13-709-85	Yellow	1

Nozzle Filters for Macropipettes



Add protection against liquid overflow or pipette contamination. Filters are interchangeable, non-sterile and non-autoclavable. Fits Socorex macro model pipettes.

Cat. No.	Fits	Material	Qty/Bag
13-710-932	Acura® manual 835, 2 and 5mL	PP fibers	250
13-707-77D	Acura® manual 835, 10mL	PP fibers	100

Work Stations, Models 337 & 340



337



340

Cat. No.	Color	Qty / Pack
Universal 7 Pipette Work Station, Model 337		
02-912-675	Ice blue	1
02-912-676	Mint green	1
02-912-677	Vanilla yellow	1
02-912-678	Pastel rose	1
03-410-14	Light grey	1
3 Pipette Work Station, Model 340		
02-912-679	Light grey	1

Pasteur Pipette Adapter



PVDF adapter fits pipette nozzle to accommodate standard glass Pasteur pipettes. The adapter has two FPM O-rings guaranteeing proper holding and tightness of standard glass 2mL Pasteur Pipettes.

Cat. No.	Description	Qty / Pack
02-912-671	For model 835, 2mL	1
02-912-672	For model 835, 5mL	1

Disposable Glass Pasteur Pipettes

Cat. No.	Length (mm)	Tip Length (mm)	Body Length (mm)	Shelf Pack	Qty/Case
13-678-8C	150	45	101	200	1000
13-678-8D	230	108	120	200	1000

Silicone Grease for manual Pipettes

Cat. No.	Description	Qty / Pack
02-912-673	1 gram Tube	5
02-912-674	10 gram Tube	1

Shelf Pipette Holder, Model 332



Cat. No.	Color	Qty / Pack
Shelf Pipette Holder, Model 332		
13-709-413	Transparent blue	2
13-709-414	Transparent blue	4

Pipette Tips Ordering Information

						DNase, RNase Free	Filter	Pyrogen Free	Sterile
Microtips, 10µL									
	Cat No.	Length (mm)	Description	Qty/Case					
	13-707-64	45	Short Tip, 10 racks of 100, Natural	1000	✓				
	13-707-65	76	Long Tip, 4 racks of 200, Natural	800	✓				
	03-400-18	31	10 racks of 96 tips, Natural	960					
	03-400-19	31	10 racks of 96 tips, Natural	960	✓		✓	✓	
	03-400-20	31	Bulk pack of 1000 tips, Natural	1000					
Microtips, 100µL									
	Cat No.	Length (mm)	Description	Qty/Case					
	03-400-11	54	10 racks of 96 tips, Natural	960	✓	✓	✓	✓	
Microtips, 200µL									
	Cat No.	Length (mm)	Description	Qty/Case					
	13-707-66	50	10 racks of 96 tips, Natural	960	✓				
	13-707-67	50	10 racks of 96 tips, Natural	960	✓		✓	✓	
	13-707-68	50	Bulk pack of 1000 tips, Natural	1000					
	13-707-69	53	Bulk pack of 1000 tips, Yellow	1000	✓		✓		
	13-707-70	53	10 racks of 96 tips, Yellow	960	✓		✓		
Microtips, 300 / 350µL									
	Cat No.	Length (mm)	Description	Qty/Case					
	03-400-14	59	300µL - Bulk pack of 1000 tips, Natural	1000	✓	✓			
	03-400-17	59	300µL - 10 racks of 96 tips, Natural	960	✓	✓	✓	✓	
	02-912-680	59	350µL - Bulk pack of 1000 tips, Natural	1000					
	02-912-681	59	350µL - 10 racks of 96 tips, Natural	960					
Microtips, 1000µL									
	Cat No.	Length (mm)	Description	Qty/Case					
	13-707-71	78	Bulk pack of 1000 tips, Blue	1000	✓		✓		
	13-707-72	78	10 racks of 100 tips, Blue	1000	✓		✓		
	03-400-12	88	Individually wrapped, Natural	1000	✓	✓	✓	✓	
	03-400-13	88	10 racks of 100 tips, Natural	1000	✓	✓	✓	✓	
Macro tips, 2, 5, 10mL									
	Cat No.	Length (mm)	Description	Qty/Case					
	21-263-1B	115	2mL - Bulk pack of 250 tips, Natural	250					
	21-263-1D	150	10mL - Bulk pack of 100 tips, Natural	100					
	02-912-682		Autoclaving Box for 24 - 10mL tips	4					
	X ¹⁾	02-912-683	5mL - 2 packs of 250 tips, Natural*	500					
	Y ¹⁾	02-912-684	5mL - 2 racks of 50 tips, Natural*	100					

¹⁾ 5mL tip used for 2mL unit up to serial number 17091050 *Graduated

Acura® manual Pipettes

Acura® manual 825 / 835 Triopack

- Three adjustable micropipettes
- Large choice of volume combinations up to 10mL
- Nine different packs



Including: Sampling of pipette tips, silicone grease, Q.C. certificates and operating instructions

Cat. No.	Contents (Micro / Macropipette Models)		
13-710-900	2µL (0.1 - 2)	10µL (0.5 - 10)	50µL (5 - 50)
13-710-901	2µL (0.1 - 2)	20µL (2 - 20)	200µL (20 - 200)
13-710-902	10µL (1 - 10)	50µL (5 - 50)	200µL (20 - 200)
13-710-903	10µL (0.5 - 10)	100µL (10 - 100)	1000µL (100 - 1000)
13-710-904	10µL (1 - 10)	100µL (10 - 100)	1000µL (100 - 1000)
13-710-905	20µL (2 - 20)	200µL (20 - 200)	1000µL (100 - 1000)
13-710-906	50µL (5 - 50)	200µL (20 - 200)	1000µL (100 - 1000)
13-710-907	100µL (10 - 100)	1000µL (100 - 1000)	5mL (0.1 - 5)
13-710-908	1000µL (100 - 1000)	5mL (0.5 - 5)	10mL (1 - 10)

* This pipette must be used with a 200µL pipette tip

Acura® manual 826 XS Pipette Starter Kit



Cat. No.	Contents	Qty
02-911-675	W810302-XS (0.5 - 10µL)	1
	W810310-XS (0.5 - 10µL)	1
	W810312-XS (0.5 - 10µL)	1
	W810314-XS (0.5 - 10µL)	1
	Twister Blue Pipette Stand	1
	Rack with 10µL tips	1
	Rack with 200µL tips	1
	Rack with 1000µL tips	1

Acura® manual 826 XS TwiXS Pack

- Two adjustable volume pipettes
- Free shelf pipette holder
- Volume combinations up to 1000µL
- Six different packs



Including: Shelf pipette holder, pipette tips samples, silicone grease, Q.C. certificates and operating instructions

Cat. No.	Contents (Micropipettes)	
13-709-409	2µL (0.1 - 2)	20µL (2 - 20)
13-709-410	10µL (0.5 - 10)	100µL (10 - 100)
13-710-910	20µL (2 - 20)	200µL (20 - 200)
13-709-411	50µL (5 - 50)	200µL (20 - 200)
13-709-412	100µL (10 - 100)	1000µL (100 - 1000)
13-710-911	200µL (20 - 200)	1000µL (100 - 1000)



WHEATON® is a registered trademark of DWK Life Sciences LLC. Acura® and Socorex® are registered trademarks of Socorex Isba S.A. Twister™ and Justip™ are trademarks of Socorex Isba S.A.

Copyright © 2018 DWK Life Sciences LLC.

FBRO_011 05/2018

In the United States:

For customer service, call 1-800-766-7000
To fax an order, use 1-800-926-1166
To order online: fishersci.com

In Canada:

For customer service, call 1-800-234-7437
To fax an order, use 1-800-463-2996
To order online: fishersci.ca

