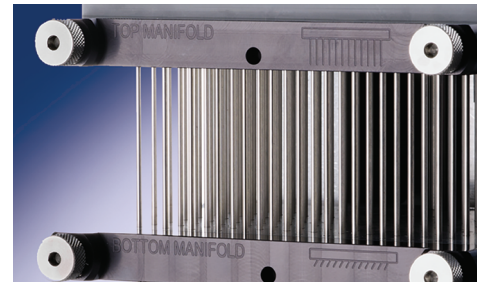
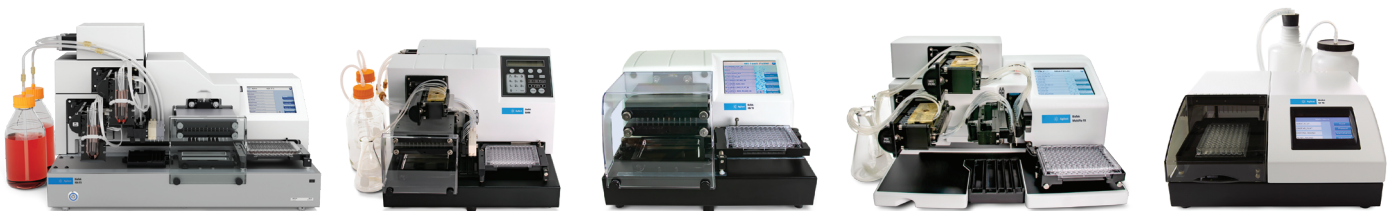


Agilent BioTek Liquid Handling Accessories



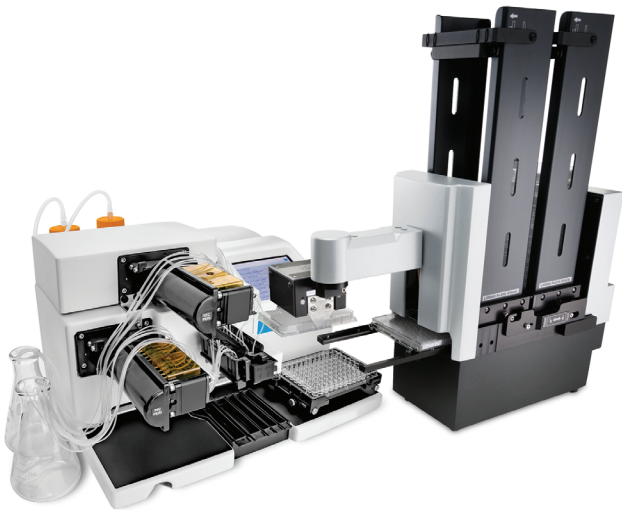
Optimize and automate your workflow

Agilent BioTek offers a range of accessories designed to optimize washing and dispensing applications, while automating throughput for a wide variety of applications.



Peripherals

Agilent BioTek microplate washers, dispensers, and combination systems are versatile and powerful, enabling a wide range of applications in the life science laboratory. Enhance the workflow even further by integrating with Agilent BioTek automation instruments.



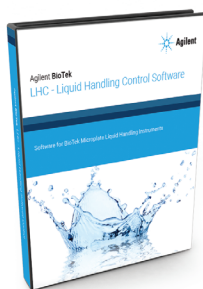
BioStack microplate stacker

The Agilent BioTek BioStack microplate stacker offers automated throughput for 10, 30, or 50 plates at a time. BioStack easily integrates with the Agilent BioTek 405 TS/LS washers, 406 FX and EL406 washer dispensers, MultiFlo FX multimode dispenser, and MicroFill dispenser, creating a compact system for standalone use, or for use within a biosafety cabinet. BioStack 4 features de and relidding capability, ideal for use with sensitive cell-based assays.



BioSpa 8 automated incubator

To automate workflows from routine ELISAs to live cell imaging assays, integrate an Agilent BioTek EL406, 405 TS, or MultiFlo FX to the Agilent BioTek BioSpa 8 automated incubator and an Agilent BioTek imager or microplate reader. BioSpa 8 automates all assay steps from liquid handling to data and image analysis, for up to eight microplates or other vessels. The system requires only minimal user interaction, freeing resources for other lab priorities.



Liquid Handling Control software

The Agilent BioTek liquid handling systems offer proven performance, reliability, and easy operation from their touch screen and keypad interfaces. To manage complex programming, or to integrate an Agilent BioTek instrument into third-party automated systems, the Agilent BioTek Liquid Handling Control (LHC) software makes protocol creation simple and easy to download to the instrument. LHC software also provides a convenient integration tool for automated system software, including those with SiLA compliant requirements.

Compliance tools

The Agilent BioTek product qualification packages contain comprehensive procedures, checklists, test data, and log sheets so that users can perform IQ/OQ/PQ testing that is specific to their laboratory and organizational requirements. Qualification packages are delivered on a USB flash drive, with documentation and test data in Microsoft Word, Excel, and Adobe PDF formats.

Product qualification packages

For Use With	Part Number
50 TS	1550510
405 TS	1170522
405 LS	1170543
406 FX	2120530
EL406	7180527
ELx405 Select	7100567
MicroFill	7140517
MultiFlo	7210512
MultiFlo FX	1260521

Test reagents

Description	Compatibility	Part Number
Agilent BioTek solution number 2, 10x concentrate blue test dye (125 mL)	406 FX, EL406, 405 TS, 405 LS, ELx405, 50 TS, MultiFlo FX, MultiFlo, MicroFill	7773001
Agilent BioTek solution number 1, 100x concentrate wetting agent (125 mL)	406 FX, EL406, 405 TS, 405 LS, ELx405, 50 TS, MultiFlo FX, MultiFlo, MicroFill	7773002

Microplate washers—406 FX, EL406, 405 TS/LS, ELx405 Select



Agilent BioTek 406 FX washer dispenser.

Complete dispense and waste systems

Description	Compatibility	Part Number
Complete dispense and waste system, 4 L bottles. Includes two 4 L dispense bottles, two 4 L waste bottles, vacuum pump and all required tubing and connectors	EL406, 405 TS/LS, ELx405 Select	1170530
Complete dispense and waste system, 10 L bottles. Includes complete dispense set (p/n 117528S) and waste set (p/n 1170534S). See descriptions in dispense modules and waste modules	EL406, 405 TS/LS, ELx405 Select	1170535
Complete dispense and waste system, 20 L bottles. Includes complete 10 L dispense set (p/n 117528S) and complete 20 L waste set (p/n 1170555S). See descriptions in dispense modules and waste modules	EL406, 405 TS/LS, ELx405 Select	1170554
Complete dispense and waste system, 4 L bottles. Includes four 4 L dispense bottles, two 4 L waste bottles, vacuum pump, and all required tubing and connectors	406 FX	2120531

Complete high-flow dispense and waste systems

High-flow systems include a high-flow vacuum pump. This pump is quieter than the standard pump and offers improved performance for aspirating liquids with higher surface tension from high-density 384- and 1536-well microplates.

Description	Compatibility	Part Number
Complete dispense and waste system with high-flow vacuum pump, 4 L bottles. Includes two 4 L dispense bottles, two 4 L waste bottles, high-flow vacuum pump, and all required tubing and connectors	405 TS/LS, ELx405 Select	1170532
Complete dispense and waste system with high-flow vacuum pump, 10 L bottles. Includes dispense set (p/n 1170528S) and waste set (p/n 1170531). See descriptions in dispense sets and waste sets	405 TS/LS, ELx405 Select	1170533
Complete dispense and waste system with high-flow vacuum pump, 20 L bottles. Includes complete 10 L dispense set (p/n 117528S) and complete 20 L waste set (p/n 1170557). See descriptions in dispense sets and waste sets	405 TS/LS, ELx405 Select	1170556
Complete dispense and waste system with high-flow vacuum pump, 4 L bottles. Includes two 4 L dispense bottles, two 4 L waste bottles, high-flow vacuum pump, and all required tubing and connectors	EL406	7100751
Complete dispense and waste system with high-flow vacuum pump, 10 L bottles. Includes dispense set (p/n 7100581S) and waste set with level sense (p/n 7100582S). See descriptions in dispense sets and waste sets	EL406	7100752
Complete dispense and waste system with high-flow vacuum pump, 20 L bottles. Includes dispense set (p/n 7100581S) and waste set with level sense (p/n 7100764S). See descriptions in dispense sets and waste sets	EL406	7100763
Complete dispense and waste system with high-flow vacuum pump, 4 L bottles. Includes four 4 L dispense bottles, two 4 L waste bottles, high-flow vacuum pump, and all required tubing and connectors	406 FX	2120532
Complete dispense and waste system with high-flow vacuum pump, 10 L bottles. Includes four 10 L supply bottles, 10 L waste bottles, high-flow vacuum pump, and all required tubing and connectors	406 FX	2120533
Complete dispense and waste system with high-flow vacuum pump, 20 L bottles. Includes four 10 L supply bottles, 20 L waste bottles, high-flow vacuum pump, and all required tubing and connectors	406 FX	2120534

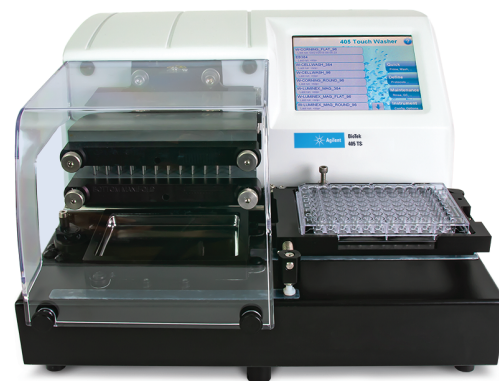
Description	Compatibility	Part Number
Dispense Sets		
Dispense set, 4 L. Includes two 4 L bottles, caps, tubing, and connectors	405 TS/LS, ELx405 Select	1170529S
Dispense set, 10 L. Two 10 L bottles, caps, tubing, and connectors	EL406, 405 TS/LS, ELx405 Select	1170528S
Dispense set, 4 L. Includes four 4 L bottles, caps, tubing, and connectors	406 FX	2120535
Dispense set, 10 L. Includes two 10 L bottles, caps, tubing, and connectors	406 FX	2120536
Waste Sets		
Waste set, 4 L. Includes two 4 L bottles, one with level sense, caps, tubing, connectors, and standard vacuum pump	406 FX, EL406, 405 TS/LS, ELx405 Select	7100746S
Waste set, 10 L. Includes one 10 L bottle, one 4 L bottle with level sense, tubing, connectors, and standard vacuum pump	406 FX, EL406, 405 TS/LS, ELx405 Select	1170534S
Waste set, 20 L. Includes one 20 L bottle, one 4 L bottle with level sense, tubing, connectors, and standard vacuum pump	EL406, 405 TS/LS, ELx405 Select	1170555S
High-Flow Waste Sets		
Waste set, 4 L, tubing, components, and high-flow vacuum pump	406 FX, EL406, 405 TS/LS, ELx405 Select	7100753S
Waste set, 10 L. Includes one 10 L bottle, one 4 L bottle with level sense, tubing, connectors, and high-flow vacuum pump	EL406, 405 TS/LS, ELx405 Select	1170531S
Waste set, 20 L. Includes one 20 L bottle, one 4 L bottle with level sense, tubing, connectors, and high-flow vacuum pump	EL406, 405 TS/LS, ELx405 Select	1170557S

Direct-drain waste sets

Direct-drain waste systems incorporate an additional sensor and pump to detect liquid level within the waste collection bottle and automatically transfer liquid to sink or other receptacle. This system allows for continuous processing in high-volume runs, eliminating the need to stop and empty waste bottles by hand.

Description	Compatibility	Part Number
Complete direct-drain waste system, including waste bottles (one with level sense), tubing, connectors, and vacuum pump	406 FX, EL406, 405 TS/LS, ELx405 Select	1170560
Complete direct-drain waste system, including waste bottles (one with level sense), tubing, connectors, and high-flow vacuum pump	406 FX, EL406, 405 TS/LS, ELx405 Select	1170562
Direct-drain waste upgrade kit. Add-on to existing waste system; waste bottles or vacuum pump not included	406 FX, EL406, 405 TS/LS, ELx405 Select	1170561-S
Dispense and Waste Components		
Vacuum pump assembly, 115 V / 230 V	406 FX, EL406, 405 TS/LS, ELx405 Select	7103035
High-flow vacuum pump assembly, 115 V / 230 V	406 FX, EL406, 405 TS/LS, ELx405 Select	7100754
Low-noise muffler for standard vacuum pump	Vacuum pump part number 7103034	01113
Vacuum gauge regulator assembly for house vacuum	406 FX, EL406, 405 TS/LS, ELx405 Select	4030551
Filter for dispense tubing	EL406, 405 TS/LS, ELx405 Select	01310
Filter for waste tubing	406 FX, EL406, 405 TS/LS, ELx405 Select	48294
Stylus kit for wash manifold	406 FX, EL406, 405 TS/LS, ELx405 Select	7100025S
Agilent BioTek Verify technology replacement plate kit	405 TS/LS (Q configurations only)	1240001

Liquid handling accessories



Agilent BioTek 405 TS washer.

Description	Compatibility	Part Number
Spare Bottles and Tubing		
Waste bottle set, 4 L. Includes one 4 L bottle and one 4 L bottle with level sense, tubing, and connectors	406 FX, EL406, 405 TS/LS, ELx405 Select	7100543S
Waste bottle set, 10 L. Includes one 10 L bottle and one 4 L bottle with level sense, tubing, and connectors	406 FX, EL406, 405 TS/LS, ELx405 Select	7100582S
Waste bottle set, 20 L. Includes one 20 L bottle and one 4 L bottle with level sense, tubing, and connectors	406 FX, EL406, 405 TS/LS, ELx405 Select	7100764S
Waste tubing set	406 FX, EL406, 405 TS/LS, ELx405 Select	7100533
Dispense tubing set for one dispense bottle	406 FX, EL406, 405 TS/LS, ELx405 Select	7100538
Dispense tubing set for four dispense bottles (for buffer switching)	EL406, 405 TS/LS, ELx405 Select	7100537
Dispense bottle and cap for 10 L bottle. Includes connectors	406 FX, EL406, 405 TS/LS, ELx405 Select	7100559
Dispense bottle and cap, with in-bottle filter for 4 L bottle	406 FX, EL406, 405 TS/LS, ELx405 Select	1170031
Dispense bottle and cap, with in-bottle filter for 10 L bottle	EL406, 405 TS/LS, ELx405 Select	1173000
Dispense bottle cap only, with in-bottle filter for 4 L bottle	406 FX, EL406, 405 TS/LS, ELx405 Select	1173003
Dispense bottle cap only, with in-bottle filter for 10 L bottle	EL406, 405 TS/LS, ELx405 Select	1173002
Waste bottle, 4 L. Includes cap and connectors	406 FX, EL406, 405 TS/LS, ELx405 Select	7100534
Waste bottle, 10 L. Includes cap and connectors	406 FX, EL406, 405 TS/LS, ELx405 Select	7100557
Waste bottle, 20 L. Includes cap and connectors	406 FX, EL406, 405 TS/LS, ELx405 Select	7100556
Waste bottle cap for use with 4, 10, or 20 L bottle	EL406, 405 TS/LS, ELx405 Select	7100531
Waste bottle with level sense for 4 L bottle. Includes cap and connectors	406 FX, EL406, 405 TS/LS, ELx405 Select	7100542
Waste bottle cap only, with level sensor. For use with 4 L bottle	406 FX, EL406, 405 TS/LS, ELx405 Select	7100544

Plate washer manifolds

A tube-in-tube aspiration manifold can improve performance of aspirating liquids with higher surface tension in high-density 384- and 1536-well microplates on systems without a high-flow vacuum pump.

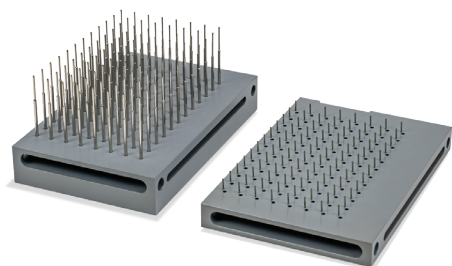
Description	Compatibility	Part Number
96-tube Dual-Action manifold kit, 7° angled dispense, and tube-in-tube aspiration	405 TS/LS, ELx405 Select	1170010
96 tube-in-tube aspiration manifold only, for integration with existing dispense manifold. A tube-in-tube aspiration manifold can improve performance of aspirating liquids with higher surface tension in high-density, 384- and 1536-well microplates on systems without a high-flow vacuum pump	406 FX, 405 TS/LS, ELx405 Select	1172046S
96-tube 7° angled dispense manifold only, for integration with existing aspiration manifold	405 TS/LS, ELx405 Select	7102068S
Aspiration manifold for 1536-well plates	406 FX	2120085

Strip washer–50 TS

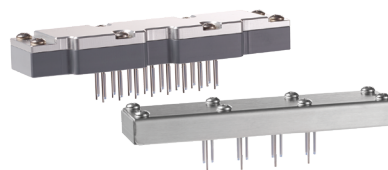


Agilent BioTek 50 TS washer.

Description	Compatibility	Part Number
Dispense and Waste Systems		
Complete dispense and waste system, 4 L bottles. Includes two dispense bottles, one waste bottle, tubing, and connectors	50 TS	4070078
Complete dispense and waste system, 4 L bottles with buffer switching. Includes three dispense bottles, one waste bottle, tubing, and connectors	50TS8V, 50TS8MV, 50TS12V, 50TS16V	4070077
Bottle and Tubing		
Waste bottle 4 L, with tubing set	50 TS	4070075
Dispense tubing set	50 TS	4070510
Strip Washer Manifolds		
1 x 8 manifold for use with 96-well plates	50 TS	4070512S
1 x 12 manifold for use with 96-well plates	50TS8, 50TS8V, 50TS8F, 50TS12, 50TS12V	4070513S
2 x 8 manifold for fast washing of 96-well plates	50TS8, 50TS8V, 50TS8F, 50TS12, 50TS12V	1550501S
1 x 8 manifold, large-bore tubes, for use with 96-well plates	50 TS	4070532S
1 x 12 manifold, large-bore tubes, for use with 96-well plates	50TS8, 50TS8V, 50TS8F, 50TS12, 50TS12V	4070531S
1 x 8 manifold, short tubes, for use with low-volume 96-well plates	50 TS	4070519S
1 x 16 manifold for use with 96- and 384-well plates	50TS16, 50TS16V	4070527S

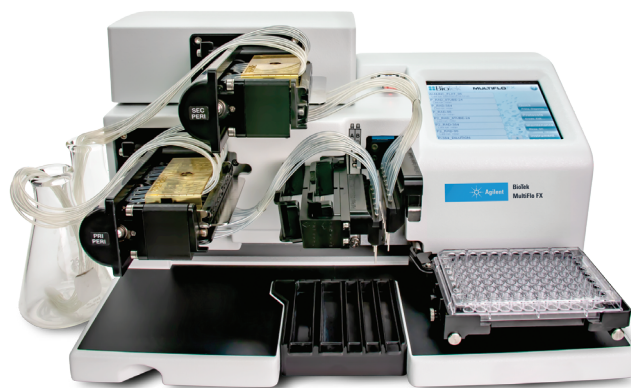


Agilent BioTek 96-tube Dual-Action manifold kit, with 7° dispense tubes and tube-in-tube aspiration manifold kit.



Agilent BioTek 1 x 16 and 1 x 12 manifolds.

Reagent dispenser—MultiFlo FX



Agilent BioTek MultiFlo FX multimode dispenser.

Description	Compatibility	Part Number
MultiFlo FX Modules		
Secondary peristaltic pump module. Includes choice of one cassette with plastic tips	MFXP1, MFXP2 (MFXP2R includes secondary peristaltic pump)	7210010
Dual syringe pump module, autoclavable. Includes pumps, bottles, and tubing. Requires manifold(s), sold separately	MFXP1, MFXP2, MFXP2R	7210008
Dual syringe pump module, nonautoclavable. Includes pumps, bottles, and tubing. Requires manifold(s), sold separately	MFXP1, MFXP2, MFXP2R	7210009
Wash module. Includes pump, bottles, tubing, and one 96/384 wash manifold. Other manifolds available, sold separately	MFXP2, MFXP2R	1260023
Agilent BioTek Automated Media Exchange (AMX) module. Includes secondary peristaltic pump module, AMX dispense and aspirate manifolds. Requires two AMX cassettes (p/n 1260035), sold separately	MFXP2; for MFXP2R contact Customer Care	1260041
AMX Components		
AMX tubing cassette	MFXP2, MFXP2R	1260035
AMX aspiration and dispense manifold set	MFXP2, MFXP2R	1260036
AMX dispense manifold only	MFXP2, MFXP2R	1260551S
AMX aspiration manifold only	MFXP2, MFXP2R	1260552S
Agilent BioTek Random Access Dispensing (RAD) Peristaltic Pump Cassettes		
0.5–50 μ L, 1 μ L increment RAD cassette, plastic tips	MFXP2R	1260017
5–2,500 μ L, 5 μ L increment RAD cassette, plastic tips	MFXP2R	1260016
10–3,000 μ L, 10 μ L increment RAD cassette, plastic tips	MFXP2R	1260015
10–3,000 μ L, 10 μ L increment RAD cassette, large-bore plastic tips	MFXP2R	1260020
0.5–50 μ L, 1 μ L increment RAD cassette, stainless steel tips	MFXP2R	1260021
5–2,500 μ L, 5 μ L increment RAD cassette, stainless steel tips	MFXP2R	1260019
10–3,000 μ L, 10 μ L increment RAD cassette, stainless steel tips	MFXP2R	1260018
8–30,000 μ L, 8-tube-to-1-tip RAD cassette, plastic tip	MFXP2R	1260022

Description	Compatibility	Part Number
Wash Manifolds*		
Wash manifold for use with 6-well plate	MFXP2, MFXP2R (with wash module)	1260009
Wash manifold for use with 12-well plate	MFXP2, MFXP2R (with wash module)	1260010
Wash manifold for use with 24-well plate	MFXP2, MFXP2R (with wash module)	1260011
Wash manifold for use with 48-well plate	MFXP2, MFXP2R (with wash module)	1260012
Wash manifold for use with 96- or 384-well plate	MFXP2, MFXP2R (with wash module)	1260013
Direct-drain waste system upgrade kit	MFXP2, MFXP2R (with wash module)	1260542
Syringe Pump Manifolds**		
Dispense manifold for use with 6-well plates, autoclavable	MFXP1, MFXP2, MFXP2R	1260537S
Dispense manifold for use with 12-well plates, autoclavable	MFXP1, MFXP2, MFXP2R	1260536S
Dispense manifold for use with 24-well plates, autoclavable	MFXP1, MFXP2, MFXP2R	1260535S
Dispense manifold for use with 48-well plates, autoclavable	MFXP1, MFXP2, MFXP2R	1260534S
Dispense manifold for use with 96- or 384-well plates, 1 x 16 array autoclavable	MFXP1, MFXP2, MFXP2R	7180543S
Dispense manifold for use with 96- or 384-well plates, 2 x 8 array autoclavable	MFXP1, MFXP2, MFXP2R	7180560S
Dispense manifold for use with 96- or 384-well plates, 2 x 8 array nonautoclavable	MFXP1, MFXP2, MFXP2R	7180548S
Dispense manifold for use with 1536-well plates, 1 x 32 array autoclavable	MFXP1, MFXP2, MFXP2R	7180552S
Dispense manifold for use with 1536-well plates, 1 x 32 array, small-bore sapphire-jeweled tips, autoclavable	MFXP1, MFXP2, MFXP2R	7180553S

*Each manifold set includes an aspiration and dispense manifold. These manifolds are nonautoclavable.

**Requires syringe pump module, p/n 7210008 (autoclavable) or p/n 7210009 (nonautoclavable).

Reagent dispenser—MicroFill



Agilent BioTek MicroFill dispenser.

Description	Compatibility	Part Number
Manifolds		
Manifold for use with 96- or 384-well plates, 1 x 16 array	MicroFill	7140508S
Manifold for use with half-area or PCR 96-well plates, 1 x 8 array	MicroFill	7140515S
Manifold for use with 24-well plates, 1 x 8 array	MicroFill	7140518S
Miscellaneous		
Stylus kit for wash manifold	MicroFill	2872304
Carriage holder for PCR microplates	MicroFill	6002076
Aerosol cover	MicroFill	4070517
Priming-trough drain set	MicroFill	7140006

Reagent dispensers—bottles and tubing

Description	Compatibility	Part Number
Dispense bottle 1 L, autoclavable	MultiFlo FX, MicroFill	7140511
Dispense bottle 2 L	MultiFlo FX	4070515
Waste bottle 2 L, without cap	MultiFlo FX, 50 TS	48140
Waste bottle 2 L, with level sense and tubing	MultiFlo FX	4070545S
Dispense bottle 4 L, with filter and tubing	MultiFlo FX, 50 TS	4070076
Waste bottle 4 L, with tubing	MultiFlo FX	1260028
Waste bottle 4 L, with level sense and tubing	MultiFlo FX	1260027
Dispense tubing set	MicroFill	7140510
Dispense tubing set, FEP-lined, nonautoclavable	MicroFill	7140522
Dispense tubing set for use with 2 L bottle	MultiFlo FX	1263007
Waste tubing set for use with 2 L bottle	MultiFlo FX	1263001
Waste tubing set for use with 4 L bottle	MultiFlo FX	7100556

Syringe pump accessories

Description	Compatibility	Part Number
Dual-syringe module. Up to two syringe modules can be installed on the 406 FX	406 FX	2120009
Dual-syringe dispenser upgrade kit, autoclavable. Includes 1 x 16 dispense manifold	406 FX, EL406, MultiFlo FX	7180006S
Syringe pump dispense tubing and check valve, autoclavable	EL406, MultiFlo FX	7183006
Syringe pump dispense tubing and check valve, organic solvent compatible, nonautoclavable	EL406, MultiFlo FX	7183002
Syringe pump dispense tubing and check valve, FEP-lined DMSO and acetonitrile compatible, nonautoclavable	EL406, MultiFlo FX	7180541
Syringe pump dispense tubing and check valve, organic solvent compatible, nonautoclavable	MicroFill	7140514
Automatic reagent-switching module for dual-syringe dispenser	EL406, MultiFlo FX	7180028
Syringe head plunger assembly, autoclavable	406 FX, EL406, MultiFlo FX	7180046
Dispense manifold for use with 96-well plates, large bore, 1 x 8 array	406 FX, EL406, MultiFlo FX	7180549S

Peristaltic pump accessories

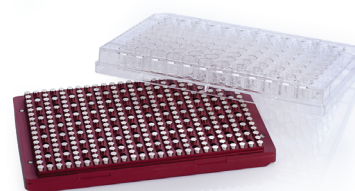
Description	Compatibility	Part Number
Peristaltic pump module for 406 FX. Cassette required, sold separately. See cassette options below	406 FX	2120016
Dispense Cassette		
0.5–50 µL, 1 µL increment, plastic tips	406 FX, EL406, MultiFlo FX	7170012
5–2,500 µL, 5 µL increment, plastic tips	406 FX, EL406, MultiFlo FX	7170011
10–3,000 µL, 10 µL increment, plastic tips	406 FX, EL406, MultiFlo FX	7170010
5–2,500 µL, 5 µL increment, large-bore plastic tips	406 FX, EL406, MultiFlo FX	7170024
10–3,000 µL, 10 µL increment, large-bore plastic tips	406 FX, EL406, MultiFlo FX	7170023
0.5–50 µL, 1 µL increment, sapphire-jeweled stainless steel tips	406 FX, EL406, MultiFlo FX	7170015
5–2,500 µL, 5 µL increment, stainless steel tips	406 FX, EL406, MultiFlo FX	7170014
10–3,000 µL, 10 µL increment, stainless steel tips	406 FX, EL406, MultiFlo FX	7170013
0.5–50 µL, 1 µL increment, plastic tips, 1536-well compatible	406 FX, EL406, MultiFlo FX	7170018
0.5–50 µL, 1 µL increment, sapphire-jeweled stainless steel tips, 1536-well compatible	406 FX, EL406, MultiFlo FX	7170016

Description	Compatibility	Part Number
Replacement Cassette Tubing		
For use with 0.5–50 µL, 1 µL increment, plastic tip cassette	406 FX, EL406, MultiFlo FX	7170009
For use with 5–2,500 µL, 5 µL increment, plastic tip cassette	406 FX, EL406, MultiFlo FX	7170008
For use with 10–3,000 µL, 10 µL increment, plastic tip cassette	406 FX, EL406, MultiFlo FX	7170007
For use with 5–2,500 µL, 5 µL increment, large-bore plastic tip cassette	406 FX, EL406, MultiFlo FX	7170026
For use with 10–3,000 µL, 10 µL increment, large-bore plastic tip cassette	406 FX, EL406, MultiFlo FX	7170025
Cassette Tubing Extension*		
42 in extension for 1 µL increment tubing	406 FX, EL406, MultiFlo FX	7170022
42 in extension for 5 µL increment tubing	406 FX, EL406, MultiFlo FX	7170021
42 in extension for 10 µL increment tubing	406 FX, EL406, MultiFlo FX	7170020
Miscellaneous		
Angled dispense kit for peristaltic pump	EL406	7180010
Large-volume (40 mL) priming trough	EL406	7182109
Dispense reservoir holder	406 FX, EL406, MultiFlo FX	7210509

*Each tubing extension kit includes eight stainless steel connectors.

Application-specific accessories

Description	Compatibility	Part Number
406 FX magnet adapter kit. Enables magnetic bead washing and dispensing. BioStack compatible Detailed install instructions included. Magnet sold separately	406 FX	2120084
Magnetic Separation		
96-well ring magnet. Beads pulled to 4-zone ring at well bottom	406 FX, EL406, MultiFlo FX	7102216
384-well ring magnet. Beads pulled to 4-zone ring at well bottom	406 FX, EL406, MultiFlo FX	7102215
96-well flat magnet. Beads pulled into band across flat-bottom well, and into center of U-bottom well	406 FX, EL406, MultiFlo FX	7103016
384-well flat magnet. Beads pulled into band across flat-bottom well, and into center of U-bottom well	406 FX, EL406, MultiFlo FX	7103017
MultiFlo FX magnet adapter. For use with magnets (p/n 7102215, p/n 7102216, p/n 7103016, and p/n 7103017)	MultiFlo FX	1262063
EL406 magnet adapter	EL406	7180011
Vacuum Separation		
96-well vacuum filtration kit. Includes filtration carrier, tubing set, regulator, and accessories	405 TS/LS	1170008
96-/384-well vacuum filtration kit. Includes filtration carrier, tubing set, regulator, and accessories	405 TS/LS	1170009
EL406 vacuum filtration module. Includes filtration carrier, tubing set, regulator, and accessories	EL406	7180029
Sample Tube Handling		
Carrier for racked mini tubes and deep-well plates up to 50 mm high	MultiFlo FX	7212042



Bead washing is available for 96- and 384-well microplates.

Learn more and buy online:

www.agilent.com/lifesciences/biotek

Get answers to your technical questions and
access resources in the Agilent Community:

community.agilent.com

U.S. and Canada

1-800-227-9770

agilent_inquiries@agilent.com

Europe

info_agilent@agilent.com

Asia Pacific

inquiry_lsca@agilent.com



DE44455.0170138889

This information is subject to change without notice.

© Agilent Technologies, Inc. 2022, 2023
Published in the USA, May 31, 2023
5994-2411EN

Distributed by Fisher Scientific. Contact us today:

In the United States

Order online: fishersci.com

Call customer service: 1-800-766-7000

In Canada

Order online: fishersci.ca

Call customer service: 1-800-234-7437

