

Prevent Slips, Trips, and Falls

Slips, trips, and falls can lead to serious injuries and lost time in the workplace. Find the right essentials to help keep your healthcare team members safe.



Caution!
Wet Floor



Safety

Protecting What Matters Most

Floor Mats

Browse durable mats in a variety of colors and sizes with beveled edges to prevent tripping, plus added features for comfort.

PURUS™ EnviroTack™ Contamination Control Mats

- For pharmaceutical, biotech, semiconductor, cleanroom, and industrial settings
- Recyclable; made from GMO-free, plant-based renewable materials
- Gray



Type	Dimensions	Color	Mfr. No.	Quantity	Cat. No.
30-Layer	18 x 45 in. (45.7 x 114.3 cm)	Blue	PM 1845 34 B	4/Case	19-126-393
			PS 1845 38 B	8/Case	19-125-813
	18 x 36 in. (45.7 x 91.4 cm)	Blue	PM 1836 34 B	4/Case	19-125-861
			PS 1836 38 B	8/Case	19-125-807
	24 x 36 in. (61 x 91.4 cm)	Blue	PM 2436 34 B	4/Case	19-125-949
			PS 2436 38 B	8/Case	19-125-819
	26 x 45 in. (66 x 114.3 cm)	Blue	PM 2645 34 B	4/Case	19-125-950
			PS 2645 38 B	8/Case	19-125-826
	26 x 45 in. (66 x 114.3 cm)	Blue	PM 3645 34 B	4/Case	19-125-952
			PS 3645 38 B	8/Case	19-125-832
60-Layer	18 x 36 in. (45.7 x 91.4 cm)	Blue	PS 1836 64 B	4/Case	19-125-810
	18 x 45 in. (45.7 x 114.3 cm)	Blue	PS 1845 64 B	4/Case	19-125-816
	24 x 36 in. (61 x 91.4 cm)	Blue	PS 2436 64 B	4/Case	19-125-822
	26 x 45 in. (66 x 114.3 cm)	Blue	PS 2645 64 B	4/Case	19-125-829
	36 x 45 in. (91.4 x 114.3 cm)	Blue	PS 3645 64 B	4/Case	19-125-835

Prevent Slips, Trips, and Falls

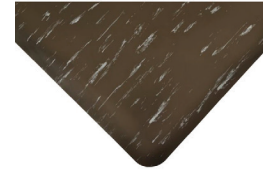


Safety

Protecting What Matters Most

NOTRAX™ Marble Tuff™ Max Anti-Fatigue Mats

- Durable, smooth marble-patterned, heavy-duty vinyl surfaces
- PVC foam bases for comfort
- Beveled edges on all four sides



Dimensions (L x W x H)	Color	Mfr. No.	Quantity	Cat. No.
3 ft. x 75 ft. x .5 in.	Blue	511R0036BU	Each	19-086-098
2 ft. x 3 ft. x .5 in.	Black	511S0023BL	Each	19-086-099
	Blue	511S0023BU	Each	19-086-100
	Gray	511S0023GY	Each	19-086-101
3 ft. x 5 ft. x .5 in.	Black	511S0035BL	Each	19-086-102
	Blue	511S0035BU	Each	19-086-103
	Gray	511S0035GY	Each	19-086-104
3 ft. x 12 ft. x .5 in.	Black	511S0312BL	Each	19-086-105
	Blue	511S0312BU	Each	19-086-106
	Gray	511S0312GY	Each	19-086-107
3 ft. x 2 ft. x 1 in.	Black	512S0023BL	Each	19-086-108
	Blue	512S0023BU	Each	19-086-109
	Gray	512S0023GY	Each	19-086-110
5 ft. x 3 ft. x 1 in.	Black	512S0035BL	Each	19-086-111
	Blue	512S0035BU	Each	19-086-112
	Gray	512S0035GY	Each	19-086-113
12 ft. x 3 ft. x 1 in.	Black	512S00312BL	Each	19-086-114
	Blue	512S00312BU	Each	19-086-115
	Gray	512S00312GY	Each	19-086-116

Prevent Slips, Trips, and Falls

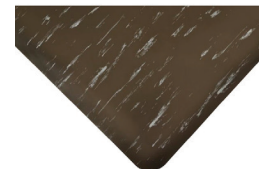


Safety

Protecting What Matters Most

NOTRAX™ Marble Sof-Tyle™ Grande™ Anti-Fatigue Mats

- Heavy-duty vinyl surfaces with PVC foam bases; beveled edges
- UniFusion™ bond guaranteed; Redstop™ non-slip backing
- Certified by the NFSI (National Floor Safety Institute)



Dimensions (L x W x H)	Color	Mfr. No.	Quantity	Cat. No.
3 ft. x 2 ft. x 1 in.	Black	970S0023BL	Each	19-086-196
	Blue	970S0023BU	Each	19-086-197
	Gray	970S0023GY	Each	19-086-198
5 ft. x 3 ft. x 1 in.	Brown	970S0023WN	Each	19-086-199
	Black	970S0035BL	Each	19-086-201
	Blue	970S0035BU	Each	19-086-202
	Gray	970S0035GY	Each	19-086-203
12 ft. x 3 ft. x 1 in.	Black	970S00312BL	Each	19-086-205
	Blue	970S00312BU	Each	19-086-206
	Gray	970S00312GY	Each	19-086-207
	Brown	970S00312WN	Each	19-086-208

Cleaning Supplies

Maintain a sanitary work environment with products for cleaning and disinfecting floors, walls, and ceilings.

Vileda Professional™ SafePlus™ MicronRoll Wipes and Dispensers

- Remove 99.98% of bacteria and germs without disinfectants
- Single-use microfiber wipes packaged to fit dispensers
- Dispensers have flexible, antibacterial, and self-closing lids



Description	Mfr. No.	Quantity	Cat. No.
SafePlus Maxi Wipes, 11 x 12 in., 120 Wipes/Roll, Blue	PS 2436 38 B	8/Case	19-125-819
SafePlus Maxi Wipes, 11 x 12 in., 120 Wipes/Roll, Yellow	PM 2645 34 B	4/Case	19-125-950
SafePlus Maxi Dispenser, Recycled	PS 2645 38 B	8/Case	19-125-826
Replacement Feeder for SafePlus Maxi Dispenser	PM 3645 34 B	4/Case	19-125-952
Replacement Lid for SafePlus Maxi Dispenser	PS 3645 38 B	8/Case	19-125-832
SafePlus Mini Wipes, 6 x 8 in., 120 Wipes/Roll, Blue	PS 1836 64 B	4/Case	19-125-810
SafePlus Mini Wipes, 6 x 8 in., 120 Wipes/Roll, Yellow	PS 1845 64 B	4/Case	19-125-816
SafePlus Mini Dispenser	PS 2436 64 B	4/Case	19-125-822
Replacement Feeder for SafePlus Mini Dispenser	PS 2645 64 B	4/Case	19-125-829
Replacement Lid for SafePlus Mini Dispenser	PS 3645 64 B	4/Case	19-125-835

Prevent Slips, Trips, and Falls



Safety

Protecting What Matters Most

Vileda Professional™ CombiSpeed Pro Mop Frames

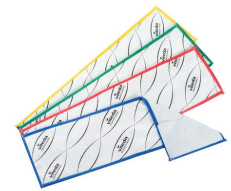
- Slim, angled frame ends and symmetrical double axes
- Lightweight, low-profile design
- Attach to Vileda Extendable Handles (sold separately)



Description	Mfr. No.	Quantity	Cat. No.
NovaClean Floor Cleaner, Concentrated	143572	Each	19-200-755

Vileda Professional™ MicroOne™ Premium Pocket Mops

- Microfiber cleaning performance in a disposable mop
- Additional inner layer increases absorbency and floor coverage by 30%
- Fit on CombiSpeed Pro and other common frames; frames sold separately



Color	Mfr. No.	Quantity	Cat. No.
Blue	163808	25/Pack	19-200-823
Red	163810	25/Pack	19-200-824
Yellow	163820	25/Pack	19-200-825
Green	163818	25/Pack	19-200-826

Vileda Professional™ SprayPro Inox™ Spray Mop Handles

- Professional, ready-to-use spray floor cleaning system
- Lightweight stainless steel finish; universal frame connector
- Water/solution stored in the handle; 3 mL released with each spray



Description	Mfr. No.	Quantity	Cat. No.
Spray mop handle, 57 x 5 x 1 in.	151514	6/Case	19-200-900

Micronova™ NovaClean™ Cleaning Products

- Biodegradable detergents
- Do not generate static charges; will not affect conductive flooring
- Filtered to 0.1 µm



Description	Size	Mfr. No.	Quantity	Cat. No.
NovaClean Floor Cleaner, Concentrated	1 qt. (0.85 L)	NC1Q	8/Case	19-045-263
	1 gal. (3.8 L)	NC1G	Each	19-067494
	5 gal. (18.9 L)	NC15G	Each	19-035-381C
NovaClean Lab & Glass Cleaner, Ready-to-Use	1 qt. (0.85 L)	NC2Q	8/Case	19-045-264
	1 gal. (3.8 L)	NC2G	Each	19-035-3828

Prevent Slips, Trips, and Falls



Safety

Protecting What Matters Most

Micronova™ Isolator Tool and Covers

- For ergonomic cleaning of isolators, hoods, RABS, and other small equipment
- Covers are reusable, washable, and autoclavable
- Choose isolator tool with stainless-steel or plastic plates



Description	Material	Mfr. No.	Quantity	Cat. No.
Isolator Cover	Non-Woven Polyamide, Polyester Lining, Elastic Band	ITC6209	Each	19-142-602
Isolator Cover	Non-Woven Polyamide, Foam Interior, Polyester Lining, Elastic Band	ITC620911	Each	19-142-605
Isolator Cover	Microfiber, 80% Polyester, 20% Polyamide, Elastic Band	ITCAA9	50/Case	19-435-084
Isolator Cover	100% Smooth Knit Polyester, Urethane Foam Interior, Elastic Band	ITC69	50/Case	19-160-0109
Isolator Cover	Textured 100% Polyester, PolySorb Lining	ITC119NS	50/Case	19-435-083
Plastic Isolator Tool, 360 Swivel, ACME Threaded Handle Attachment	Acetal Plate, Polyketone Swivel	QPIT09	Each	19-435-082
Isolator Tool, Stainless-Steel Plate, Quick Disconnect Handle Attachment	Stainless Steel, 304 Electropolished, Polyketone	QDIT09	Each	19-160-0115

Micronova™ PocketMop™ Flat Head Mop Covers

- Economical and lightweight, with angled head
- Fits on QPSL plastic or stainless-steel frame
- Urethane foam interiors



Material	Color	Dimensions	Mfr. No.	Quantity	Cat. No.
Microfiber	Blue	35.6 x 10.2 cm (14 x 4 in.)	PKMAA14	24/Case	19-045-242
Microfiber	Blue	122 x 10 cm (48 x 4 in.)	PKMAA48	24/Case	19-116-762
Microfiber	Blue	45.7 x 10.2 cm (18 x 4 in.)	PKMAA18	24/Case	19-045-247
Non-Woven Polyamide	White	35.6 x 10.2 cm (14 x 4 in.)	PKM2014	24/Case	19-045-244
Microfiber	White	35.6 x 10.2 cm (14 x 4 in.)	PKMAW14	24/Case	19-045-243
Microfiber	White	45.7 x 10.2 cm (18 x 4 in.)	PKMAW18	24/Case	19-045-248
Smooth Knit Polyester	White	35.6 x 10.2 cm (14 x 4 in.)	PKM614	24/Case	19-045-241
Smooth Knit Polyester	White	45.7 x 10.2 cm (18 x 4 in.)	PKM618	24/Case	19-045-246
Textured Polyester	White	35.6 x 10.2 cm (14 x 4 in.)	PKM1114	24/Case	19-045-240
Textured Polyester	White	45.7 x 10.2 cm (18 x 4 in.)	PKM1118	24/Case	19-045-245

Prevent Slips, Trips, and Falls



Safety

Protecting What Matters Most



Micronova™ SlimLine™ Cleanroom Mop Adapters

Description	Length	Material	Mfr. No.	Quantity	Cat. No.
Adapter, 360 Swivel	14 in. (35.6 cm)	Electropolished SS (304), Polyketone Swivel	QSSL14	Each	19-116-731
Adapter, 360 Swivel	18 in. (45.7 cm)		QSSL18	Each	19-116-710
Adapter, 360 Swivel, ACME Threaded Handle Attachment	9 in. (22.9 cm)	PP Plate and Swivel Joint	QPSL09	Each	19-263-611
Adapter, 360 Swivel, ACME Threaded Handle Attachment	14 in. (35.6 cm)	PP Plate and Swivel Joint	QPSL14	Each	19-035-241
Adapter, 360 Swivel, ACME Threaded Handle Attachment	16 in. (40.6 cm)	PP Plate and Swivel Joint	QPSL16	Each	19-116-733
Adapter, 360 Swivel, ACME Threaded Handle Attachment	18 in. (45.7 cm)	PP Plate and Swivel Joint	QPSL18	Each	19-035-240
Quick Disconnect Adapter, 360 Swivel	9 in. (22.9 cm)	Electropolished SS (304), Polyketone Swivel	QDSL09	Each	19-041-776
Quick Disconnect Adapter, 360 Swivel	14 in. (35.6 cm)	Electropolished SS (304), Polyketone Swivel	QDSL14	Each	19-041-768A
Quick Disconnect Adapter, 360 Swivel	18 in. (45.7 cm)	Electropolished SS (304), Polyketone Swivel	QDSL18	Each	19-041-768B

Micronova™ SlideMop™ Flat Head Frame and Mop Covers

- For “dip and wring” or “saturation” methods
- Stainless-steel or plastic frame
- For Controlled Environments ISO 5 thru 9



Description	Autoclavable	Mfr. No.	Quantity	Cat. No.
Collapsible PP Frame, Threaded Handle Attachment	Yes	QSM16	Each	19-116-749
Collapsible SS Frame, Threaded Handle Attachment	No	QPSM16	Each	19-116-750
SlideMop Slip-on Mop Cover, Smooth polyester	No	MZCR6316	24/Case	19-116-757

Prevent Slips, Trips, and Falls



Safety

Protecting What Matters Most

Micronova™ Mop Frames, Heads, and Adapters

- Choose from options to disinfect or clean to a dry finish
- Fabrics include smooth or textured polyester, meshes for scrubbing, and other low-linting materials
- All flat head mop adapters have 360° swivel



Description	Mfr. No.	Quantity	Cat. No.
Micronova™ SlimLine™ Cleanroom Mop Adapters	QPSL14	Each	19-035-241
Micronova™ PocketMop™ Flat Head Mop Covers	PKM614	4/Pack	19-045-241
Micronova™ SnapMop™ Flat Head Mop Covers	QPSL-14	24/Case	19-305-231
Micronova™ SlideMop™ Collapsible Frame, Stainless Steel with Threaded Handle Attachment	QPSM16	Each	19-116-750
SlideMop Slip-On Flat Head Mop Covers, Smooth Polyester	MZCR6316	24/Case	19-116-757

Micronova™ Cleanroom Sponges

- Nonsterile; reusable; can be autoclaved
- Interiors: cleanroom approved, reticulated urethane foam
- Multiple material cover options



Material	Dimensions	Mfr. No.	Quantity	Cat. No.
Non-Woven Polyamide	15.2 x 10.2 cm (6 x 4 in.)	SP2046	24/Case	19-142-623
Polyvinyl Acetate	12.7 x 7.6 cm (5 x 3 in.)	SP4533	24/Case	19-435-036
100% Smooth Knit Polyester	15.2 x 7.6 cm (6 x 3 in.)	SP6363	24/Case	19-035-375D
100% Smooth Knit Polyester	7.6 x 7.6 cm (3 x 3 in.)	SP633	24/Case	19-035-375A
100% Smooth Knit Polyester	15.2 x 10.2 cm (6 x 4 in.)	SP646	24/Case	19-035-375B
100% Smooth Knit Polyester	17.2 x 10.8 cm (6.75 x 4.25 in.)	SP6745	24/Case	19-035-375C
100% Polyester Mesh Fabric	15.2 x 7.6 cm (6 x 3 in.)	SP68363	24/Case	19-035-377D
100% Polyester Mesh Fabric	7.6 x 7.6 cm (3 x 3 in.)	SP6833	24/Case	19-035-377A
100% Polyester Mesh Fabric	15.2 x 10.2 cm (6 x 4 in.)	SP6846	24/Case	19-035-377B

Rubbermaid™ HYGEN™ Microfiber General Purpose Cloths

- Polyester with scrubbing zig-zag design
- Tested to withstand 200 launderings in hot water with bleach
- Double-finished edges for durability



Dimensions	Color	Mfr. No.	Quantity	Cat. No.
40.6 x 40.6 cm (16 x 16 in.)	Green	FGQ62000GR00	12/Case	18-367-023
40.6 x 40.6 cm (16 x 16 in.)	Red	FGQ62000RD00	12/Case	18-367-024
40.6 x 40.6 cm (16 x 16 in.)	Blue	FGQ62000BL00	12/Case	18-367-025



Tapes and Labels

Find products for marking and labeling hazardous areas, equipment, and containers to encourage caution.

Brady™ Anti-Skid Tape Hazard Marking Die Cut Cleats

- For indoor or outdoor use
- Polyester with permanent pressure-sensitive acrylic adhesive
- Chemical, oil, and water resistant



Message	Colors	Dimensions	Mfr. No.	Quantity	Cat. No.
CAUTION	Black on Yellow	6 x 24 in.	78160	24/Pack	19-103-784
WATCH YOUR STEP	Black on Yellow	6 x 24 in.	78163	24/Pack	19-103-787

Brady™ Floor and Marking Tapes

- Non-skid tapes bond permanently to clean, dry floors; withstand grease and oil
- Glow-in-the-dark tape is photoluminescent with unlimited recharging ability
- Marking kit contains materials for implementing 5S Lean visuals in your facility



Description	Dimensions	Mfr. No.	Quantity	Cat. No.
Brady Anti-Skid Floor Tape, Black/Yellow	2 in. x 60 ft.	78147	Each	19-807-255
Brady Anti-Skid Floor Tape, Black	2 in. x 60 ft.	78190	Each	19-103-790
Brady™ BradyGlo™ Glow-in-the-Dark Striped Floor Tape, Black/White	2 in. x 15 ft.	76430	Each	19-103-776
Brady™ ToughStripe™ Premium 5S Marking Kits, Include Floor Marking Tapes, Corner Marks, Shadow Vinyl, Border Tapes		142109	Each	19-110-631

Prevent Slips, Trips, and Falls



Safety

Protecting What Matters Most

Brady™ BradyPrinters and Label Kits

- BradyPrinter M611 Mobile Label Printer includes Express Labels app and Brady Workstation Laboratory Identification Suite software
- BradyPrinter S3100 Sign and Label Makers print on different labels, tapes, tags, and materials
- Choice of supplies to support arc flash warning, pipe IDs, 5S Lean, safety and compliance, and general industrial needs

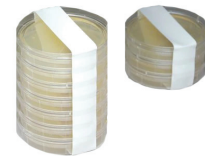


Description	Mfr. No.	Quantity	Cat. No.
Brady™ BradyPrinter M611 Mobile Label Printer	M611AMLAB	Each	19-129-498
Brady™ BradyPrinter S3100 Sign and Label Makers*	S3100W	Each	19-211-102
Supply Kits for Brady™ BradyPrinter S3100 Printers			
Arc Flash Warning Supply Kits*	S3100WARCKIT	Each	19-211-188
Pipe ID Supply Kits*	S3100WPIPEKIT	Each	19-211-191
5S Lean Visual Supply Kits*	S3100WLEANKIT	Each	19-211-190
Safety and Compliance Supply Kits*	S3100WSAFEKIT	Each	19-211-189
General Industrial Supply Kits*	S3100WGENKIT	Each	19-211-192

*Include printer, power cord, USB cable, drivers CD, stylus, cleaning kit, cutter cleaning tool, quick start guide, and documentation holder

Micronova™ MicroSeal™ Tapes

- Microseal tape available in 0.5 and 1 in. widths
- Microseal Cuff Seal tape available in 2 and 3 in. widths
- White color



Description	Dimensions	Mfr. No.	Quantity	Cat. No.
MicroSeal™ Tape	0.5 in. x 18 yd.	CSLB12WH	72/Case	19-130-0315
	1 in. x 18 yd.	CSLB1WH	36/Case	19-130-1267
MicroSeal™ Cuff Seal Tape	2 in. x 18 yd.	CSLB2WH	Each	19-095-009
	3 in. x 18 yd.	CSLB3WH	12/Case	19-305-831

Prevent Slips, Trips, and Falls



Safety

Protecting What Matters Most

Micronova™ PCX™ Polyethylene Tapes

- For sealing, color coding, labeling, batching
- Low density, low outgassing
- Acrylic adhesive



Dimensions	Color	Mfr. No.	Quantity	Cat. No.
1 in. x 36 yd. (2.5 cm x 33 m)	Transparent	PCX1TR	36/Case	19-035-352K
2 in. x 36 yd. (5.1 cm x 33 m)	Transparent	PCX2TR	24/Case	19-035-354K
1 in. x 36 yd. (2.5 cm x 33 m)	White	PCX1WH	36/Case	19-035-352M
2 in. x 36 yd. (5.1 cm x 33 m)	White	PCX2WH	24/Case	19-035-354M

Micronova™ Cleanroom Barrier Tapes

- For designating restricted areas in cleanroom and controlled environments
- High visibility non-adhesive polyethylene film
- Messages in bold black letters



Message	Dimensions	Color	Mfr. No.	Quantity	Cat. No.
CAUTION	3 in. x 1,000 ft. (7.6 cm x 305 m)	Yellow	BT2003YE	4/Case	19-435-109
DO NOT ENTER		Red	BT1003RE	4/Case	19-435-108

Micronova™ SST™ Striped Safety Tape

- Use to delineate or color code equipment or areas
- Pressure-sensitive laminated vinyl with rubber adhesive
- Resists scuffs, solvents, humidity, and oils



Dimensions	Color	Mfr. No.	Quantity	Cat. No.
2 in. x 18 yd. (5.1 cm x 16.5 m)	Black/White	SST182BLWH	24/Case	19-305-826
1 in. x 18 yd. (2.53 x 16.5 m)	Black/Yellow	SST181BLYE	24/Case	19-305-824
2 in. x 18 yd. (5.1 cm x 16.5 m)	Black/Yellow	SST182BLYE	24/Case	19-305-825
3 in. x 18 yd. (7.6 cm x 16.5 m)	Black/Yellow	SST183BLYE	24/Case	19-435-085

Prevent Slips, Trips, and Falls



Safety

Protecting What Matters Most

Autoclave Tapes

- Micronova™ tape stripes change from green to black to indicate sterilization
- Fisherbrand™ tape stripes change from white to black to indicate sterilization



Description	Quantity	Cat. No.
Micronova™ Lead-Free Cleanroom Autoclave Tape, 1 in. x 60 yd.	Each	19-305-245
Fisherbrand™ Lead-Free Autoclave Tape, 0.75 in. x 180 ft.	Each	15-901-110
	4/Pack	15-901-111
Fisherbrand™ Lead-Free Autoclave Tape, 1 in. x 180 ft.	Each	15-901-113
	3/Pack	15-901-112

Fisherbrand™ Cleanroom Tapes

- For light industrial use, clean construction, and cleanroom support
- Nonsterile
- Do not autoclave



Material		Color	Quantity	Case Quantity	Cat. No.
Nylon	2 in. x 36 yd. (5.1 cm x 33 m)	Black	Each	24/Case	19-120-3232
Nylon	2 in. x 36 yd. (5.1 cm x 33 m)	Brown	Each	24/Case	19-120-3233
Nylon	2 in. x 36 yd. (5.1 cm x 33 m)	Dark Blue	Each	24/Case	19-120-3234
Nylon	2 in. x 36 yd. (5.1 cm x 33 m)	Dark Green	Each	24/Case	19-120-3235
Nylon	2 in. x 36 yd. (5.1 cm x 33 m)	Light Blue	Each	24/Case	19-120-3236
Nylon	2 in. x 36 yd. (5.1 cm x 33 m)	Light Green	Each	24/Case	19-120-3237
Nylon	2 in. x 36 yd. (5.1 cm x 33 m)	Orange	Each	24/Case	19-120-3238
Nylon	2 in. x 36 yd. (5.1 cm x 33 m)	Purple	Each	24/Case	19-120-3239
Nylon	2 in. x 36 yd. (5.1 cm x 33 m)	Red	Each	24/Case	19-120-3240
Nylon	2 in. x 36 yd. (5.1 cm x 33 m)	Transparent	Each	24/Case	19-120-3241
Nylon	2 in. x 36 yd. (5.1 cm x 33 m)	White	Each	24/Case	19-095-108
Nylon	2 in. x 36 yd. (5.1 cm x 33 m)	Yellow	Each	24/Case	19-120-3242
Polyethylene	1 in. x 36 yd. (2.5 cm x 33 m)	White	N/A	36/Case	19-120-2532
Polyethylene	1 in. x 36 yd. (2.5 cm x 33 m)	Yellow	N/A	36/Case	19-120-2535

Prevent Slips, Trips, and Falls



Safety

Protecting What Matters Most

Stands, Stools, and Carts

Find signs to warn team members of slippery surfaces, non-skid step stools for safely retrieving hard-to-reach items, and storage carts for safe materials transport.



Stands

Description	Color	Mfr. No.	Quantity	Cat. No.
Brady™ Two-Sided Stands, Message: CAUTION WET FLOOR	Yellow	104809	Each	19-017553



Stools

Description	Color	Mfr. No.	Quantity	Cat. No.
Rubbermaid™ Heavy-Duty Step Stools with Non-Skid Bottom Ring, Rubber Wheels, and Retractable Casters	Beige	FG252300BEIG	Each	11-931-1



Carts

Description	Color	Mfr. No.	Quantity	Cat. No.
Rubbermaid™ Heavy-Duty Utility Cart with Aluminum Uprights, L x W x H: 33.6 x 18.6 x 38 in. (85.4 x 47.3 x 96 cm)	Platinum	FG342488PLAT	Each	11-926-71
Rubbermaid™ Xtra™ Utility Cart, HDPE, Open-Sided, 3 Shelves, L x W x H: 40.6 x 20 x 38 in. (103 x 51 x 96 cm), on Casters	White	FG409100OWHT	Each	11-926-87
Rubbermaid™ Xtra™ Utility Cart, HDPE, Enclosed on 3 Sides, 3 Shelves, L x W x H: 40.6 x 20 x 38 in. (103 x 51 x 96 cm), on Casters	White	FG409300OWHT	Each	11-926-89
Rubbermaid™ Heavy-Duty Tray-Shelf Carts, Polypropylene, L x W x H: 39 x 18 x 33 in. (99 x 45.4 x 84.5 cm), on Casters,	Black	FG450088BLA	Each	19-166-523

Browse our full collection of safety products at fisherhealthcare.com.

Distributed by Fisher Healthcare. Contact us today:

In the United States

Order online: fisherhealthcare.com

Fax an order: 1-800-290-0290

Call customer service: 1-800-640-0640



© 2021 Thermo Fisher Scientific Inc. All rights reserved.

Trademarks used are owned as indicated at fishersci.com/trademarks.

21-535-0865 ZT 05/2021 BN20216102