

Agilent BioTek Liquid Handling Accessories



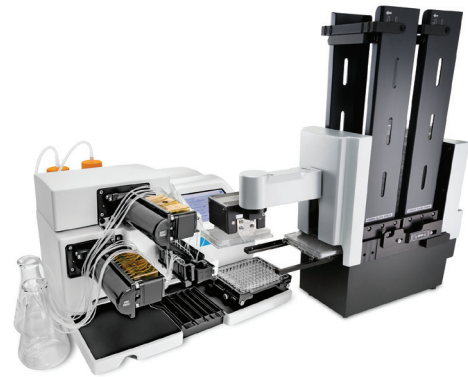
Optimize and automate your workflow

Agilent BioTek offers a range of accessories designed to optimize washing and dispensing applications, while automating throughput for a wide variety of applications.



Peripherals

Agilent BioTek microplate washers, dispensers, and combination systems are versatile and powerful, enabling a wide range of applications in the life science laboratory. Enhance the workflow even further, by integrating with Agilent BioTek automation instruments.



Agilent BioTek BioStack microplate stacker

BioStack microplate stacker offers automated throughput for 10, 30 or 50 plates at a time. BioStack easily integrates with the Agilent BioTek 405 TS/LS, EL406, MultiFlo FX and MicroFill creating a compact system for standalone use, or within a biosafety cabinet. BioStack 4 features de-lidding and re-lidding capability, ideal for use with sensitive cell-based assays.



Agilent BioTek BioSpa automated incubator

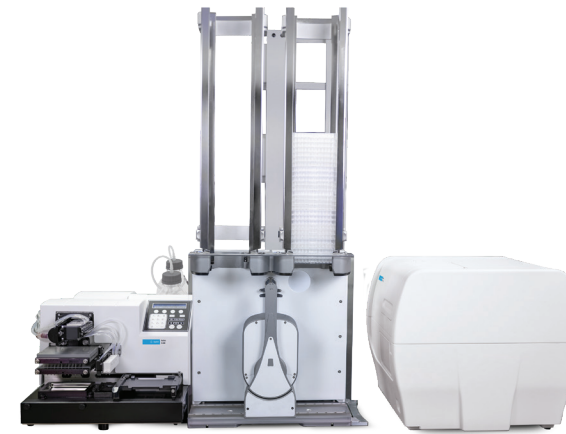
To automate workflows from routine ELISAs to live cell imaging assays, integrate an EL406, 405 TS or MultiFlo FX to BioSpa automated incubator and a BioTek imager or microplate reader. BioSpa automates all assay steps from liquid handling through data and image analysis, for up to eight microplates or other vessels. The system requires only minimal user interaction, freeing resources for other lab priorities.



Agilent BioTek Liquid Handling Control software

The Agilent BioTek liquid handling systems offer proven performance, reliability and easy operation from their touchscreen and keypad interfaces. To manage complex programming, or to integrate an Agilent BioTek instrument into third party automated systems, Liquid Handling Control (LHC) Software makes protocol creation simple and easy to download to the instrument; it also provides a convenient integration tool for automated system software, including those with SiLA compliant requirements.

Peripherals (Cont.)



Agilent BenchCel microplate handler

The Agilent BenchCel microplate handler is a compact, automated system that can be integrated to the MultiFlo FX multimode dispenser and EL406 washer dispenser, enabling automated workflows for a variety of applications. The BenchCel is compatible with a wide range of microplates including deep-well.

Compliance tools

The Agilent BioTek product qualification packages contain comprehensive procedures, checklists, test data and log sheets so that users can perform IQ/OQ/PQ testing specific to their laboratory and organizational requirements. Qualification packages are delivered on a USB flash drive, with documentation and test data in Microsoft Word, Excel and Adobe PDF formats.

Product qualification packages

For use with	Cat. No.
50 TS	1550510
405 TS	1170522
405 LS	1170543
EL406	7180527
ELx405 Select Deep Well	7100567
MicroFill	7140517
MultiFlo	7210512
MultiFlo FX	1260521

Test reagents

Description	Compatibility	Cat. No.
Agilent BioTek Solution #2 10x concentrate blue test dye (125 mL)	EL406, 405 TS, 405 LS, ELx405, 50 TS, MultiFlo FX, MultiFlo, MicroFill	7773001
Agilent BioTek Solution #1 100x concentrate wetting agent (125 mL)	EL406, 405 TS, 405 LS, ELx405, 50 TS, MultiFlo FX, MultiFlo, MicroFill	7773002

Microplate washers: EL406, 405 TS/LS, ELx405 deep well plate washers



Agilent BioTek EL406 microplate washer dispenser

Complete dispense and waste systems

Description	Compatibility	Cat. No.
Complete dispense and waste system, 4 L bottles. Includes (2) 4 L dispense bottles, (2) 4 L waste bottles, vacuum pump and all required tubing and connectors	EL406, 405 TS/LS, ELx405 DW	1170530
Complete dispense and waste system, 10 L bottles. Includes complete dispense set Cat. No. 117528S and waste set Cat. No. 1170534S. See descriptions in dispense modules and waste modules, below	EL406, 405 TS/LS, ELx405 DW	1170535
Complete dispense and waste system, 20 L bottles. Includes complete 10 L dispense set Cat. No. 117528S and complete 20 L waste set Cat. No. 1170555S. See descriptions in dispense modules and waste modules, below	EL406, 405 TS/LS, ELx405 DW	1170554

Complete high-flow dispense and waste systems

High-flow systems include a high-flow vacuum pump. This pump is quieter than the standard pump and offers improved performance for aspirating liquids with higher surface tension from high density (384- and 1536-well) microplates.

Description	Compatibility	Cat. No.
Complete dispense and waste system with high-flow vacuum pump, 4 L bottles. Includes (2) 4 L dispense bottles, (2) 4 L waste bottles, high-flow vacuum pump and all required tubing and connectors	405 TS/LS, ELx405 DW	1170532
Complete dispense and waste system with high-flow vacuum pump, 10 L bottles. Includes dispense set Cat. No. 1170528S and waste set 1170531. See descriptions in dispense sets and waste sets, below	405 TS/LS, ELx405 DW	1170533
Complete dispense and waste system with high-flow vacuum pump, 20 L bottles. Includes complete 10 L dispense set Cat. No. 117528S and complete 20 L waste set Cat. No. 1170557. See descriptions in dispense sets and waste sets	405 TS/LS, ELx405 DW	1170556
Complete dispense and waste system with high-flow vacuum pump, 10 L bottles. Includes dispense set Cat. No. 7100581S and waste set with level sense, Cat. No. 7100582S. See descriptions in dispense sets and waste sets	EL406	7100752
Complete dispense and waste system with high-flow vacuum pump, 20 L bottles. Includes dispense set Cat. No. 7100581S and waste set with level sense, Cat. No. 7100764S. See descriptions in dispense sets and waste sets	EL406	7100763

Microplate washers: EL406, 405 TS/LS, ELx405 deep well plate washers (cont.)

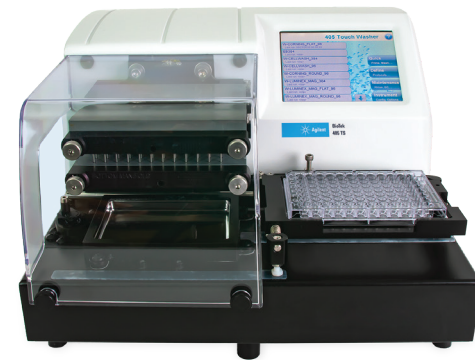
Description	Compatibility	Cat. No.
Dispense sets		
Dispense set, 4 L. Includes (2) 4 L bottles, caps, tubing and connectors	405 TS/LS, ELx405 DW	1170529S
Dispense set, 10 L. (2) 10 L bottles, caps, tubing and connectors	EL406, 405 TS/LS, ELx405 DW	1170528S
Waste sets		
Waste set, 4 L. Includes (2) 4 L bottles, one with level sense, caps, tubing, connectors and standard vacuum pump	EL406, 405 TS/LS, ELx405 DW	7100746S
Waste set, 10 L. Includes (1) 10 L bottle, (1) 4 L bottle with level sense, tubing, connectors and standard vacuum pump	EL406, 405 TS/LS, ELx405 DW	1170534S
Waste set, 20 L. Includes (1) 20 L bottle, (1) 4 L bottle with level sense, tubing, connectors and standard vacuum pump	EL406, 405 TS/LS, ELx405 DW	1170555S
High-flow waste sets		
Waste set, 4 L, tubing, components, and high-flow vacuum pump	EL406, 405 TS/LS, ELx405 DW	7100753S
Waste set, 10 L. Includes (1) 10 L bottle, (1) 4 L bottle with level sense, tubing, connectors and high-flow vacuum pump	EL406, 405 TS/LS, ELx405 DW	1170531S
Waste set, 20 L. Includes (1) 20 L bottle, (1) 4 L bottle with level sense, tubing, connectors and high-flow vacuum pump	EL406, 405 TS/LS, ELx405 DW	1170557S

Direct drain waste sets

Direct drain waste systems incorporate an additional sensor and pump to detect liquid level within the waste collection bottle and automatically transfer liquid to sink (or other receptacle). This system allows for continuous processing in high volume runs, eliminating the need to stop and empty waste bottles by hand.

Description	Compatibility	Cat. No.
Complete direct drain waste system, including waste bottles (one with level sense), tubing and connectors and vacuum pump	EL406, 405 TS/LS, ELx405 DW	1170560
Complete direct drain waste system, including waste bottles (one with level sense), tubing and connectors and high-flow vacuum pump	EL406, 405 TS/LS, ELx405 DW	1170562
Direct drain waste upgrade kit. Add-on to existing waste system, no waste bottles or vacuum pump included	EL406, 405 TS/LS, ELx405 DW	1170561
Dispense and waste components		
Vacuum pump assembly, 115V/230V	EL406, 405 TS/LS, ELx405 DW	71003035
High-flow vacuum pump assembly, 115V/230V	EL406, 405 TS/LS, ELx405 DW	7100754
Low-noise muffler for standard vacuum pump	Vacuum pump PN 7103034	01113
Vacuum gauge regulator assembly for house vacuum	EL406, 405 TS/LS, ELx405 DW	4030551
Filter for dispense tubing	EL406, 405 TS/LS, ELx405 DW	01310
Filter for waste tubing	EL406, 405 TS/LS, ELx405 DW	48294
Stylus kit for wash manifold	EL406, 405 TS/LS, ELx405 DW	7100025S
Verify replacement plate kit	405 TS/LS (Q configurations only)	1240001

Microplate washers: EL406, 405 TS/LS, ELx405 deep well plate washers (cont.)



Agilent BioTek 405 TS microplate washer

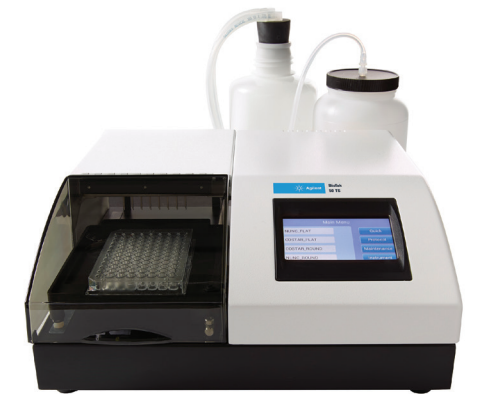
Description	Compatibility	Cat. No.
Spare bottles and tubing		
Waste bottle set, 4 L. Includes (1) 4 L bottle and (1) 4 L bottle with level sense, tubing and connectors	EL406, 405 TS/LS, ELx405 DW	7100543S
Waste bottle set, 10 L. Includes (1) 10 L bottle and (1) 4 L bottle with level sense, tubing and connectors	EL406, 405 TS/LS, ELx405 DW	7100582S
Waste bottle set, 20 L. Includes (1) 20 L bottle and (1) 4 L bottle with level sense, tubing and connectors	EL406, 405 TS/LS, ELx405 DW	7100764S
Waste tubing set	EL406, 405 TS/LS, ELx405 DW	7100533
Dispense tubing set for one dispense bottle	EL406, 405 TS/LS, ELx405 DW	7100538
Dispense tubing set for four dispense bottles (for buffer switching)	EL406, 405 TS/LS, ELx405 DW	7100537
Dispense bottle and cap for 10 L bottle. Includes connectors	EL406, 405 TS/LS, ELx405 DW	7100559
Dispense bottle and cap, with in-bottle filter for 4 L bottle	EL406, 405 TS/LS, ELx405 DW	1170031
Dispense bottle and cap, with in-bottle filter for 10 L bottle	EL406, 405 TS/LS, ELx405 DW	1173000
Dispense bottle cap only, with in-bottle filter for 4 L bottle	EL406, 405 TS/LS, ELx405 DW	1173003
Dispense bottle cap only, with in-bottle filter for 10 L bottle	EL406, 405 TS/LS, ELx405 DW	1173002
Waste bottle, 4 L. Includes cap and connectors	EL406, 405 TS/LS, ELx405 DW	7100534
Waste bottle, 10 L. Includes cap and connectors	EL406, 405 TS/LS, ELx405 DW	7100557
Waste bottle, 20 L. Includes cap and connectors	EL406, 405 TS/LS, ELx405 DW	7100556
Waste bottle cap for use with 4, 10, or 20 L bottle	EL406, 405 TS/LS, ELx405 DW	7100531
Waste bottle with level sense for 4 L bottle. Includes cap and connectors	EL406, 405 TS/LS, ELx405 DW	7100542
Waste bottle cap only, with level sensor. For use with 4 L bottle	EL406, 405 TS/LS, ELx405 DW	7100544

Plate washer manifolds

A tube-in-tube aspiration manifold can improve performance of aspirating liquids with higher surface tension in high-density (384- and 1536-well) microplates on systems without a high-flow vacuum pump.

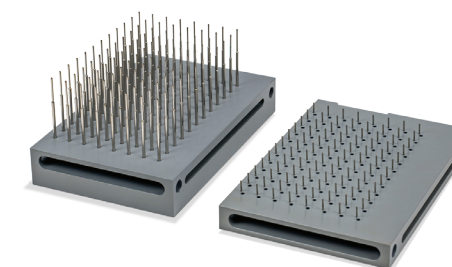
Description	Compatibility	Cat. No.
96 tube dual action manifold kit, 7 degree angled dispense, and tube-in-tube aspiration	405 TS/LS, ELx405 DW	1170010
96 tube-in-tube aspiration manifold only, for integration with existing dispense manifold. A tube-in-tube aspiration manifold can improve performance of aspirating liquids with higher surface tension in high-density (384- and 1536-well) microplates on systems without a high-flow vacuum pump	405 TS/LS, ELx405 DW	1172046S
96-tube 7 degree angled dispense manifold only, for integration with existing aspiration manifold	405 TS/LS, ELx405 DW	7102068S

Strip washer: 50 TS

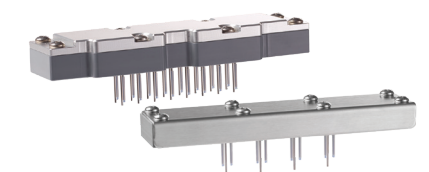


Agilent BioTek 50 TS microplate washer

Description	Compatibility	Cat. No.
Dispense and waste systems		
Complete dispense and waste system, 4 L bottles. Includes 2 dispense bottles, 1 waste bottle, tubing, and connectors	50 TS	4070078
Complete dispense and waste system, 4 L bottles with buffer switching. Includes 3 dispense bottles, 1 waste bottle, tubing, and connectors	50 TS8V, 50 TS8MV, 50 TS12V, 50 TS16V	4070077
Bottle and tubing		
Waste bottle 4 L, with tubing set	50 TS	4070075
Dispense tubing set	50 TS	4070510
Strip washer manifolds		
1 x 8 manifold for use with 96-well plates	50 TS	4070512S
1 x 12 manifold for use with 96-well plates	50 TS8, 50 TS8V, 50 TS8F, 50 TS12, 50 TS12V	4070513S
2 x 8 manifold for fast washing of 96-well plates	50 TS8, 50 TS8V, 50 TS8F, 50 TS12, 50 TS12V	1550501S
1 x 8 manifold, large bore tubes, for use with 96-well plates	50 TS	4070532S
1 x 12 manifold, large bore tubes, for use with 96-well plates	50 TS8, 50 TS8V, 50 TS8F, 50 TS12, 50 TS12V	4070531S
1 x 8 manifold, short tubes, for use with low-volume 96-well plates	50 TS	4070519S
1 x 16 manifold for use with 96 and 384-well plates	50 TS16, 50 TS16V	4070527S



Agilent BioTek 96-tube Dual-Action manifold kit, with 7° dispense tubes and tube-in-tube aspiration manifold kit



Agilent BioTek 1 x 16 and 1 x 12 manifolds

Reagent dispenser: MultiFlo FX



Agilent BioTek MultiFlo FX multimode dispenser

Description	Compatibility	Cat. No.
MultiFlo FX modules		
Secondary peristaltic pump module. Includes choice of one cassette with plastic tips	MFXP1, MFXP2 (MFXP2R includes secondary peri-pump)	7210010
Dual syringe pump module, autoclavable. Includes pumps, bottles, and tubing. Requires manifold(s), sold separately	MFXP1, MFXP2, MFXP2R	7210008
Dual syringe pump module, nonautoclavable. Includes pumps, bottles, and tubing. Requires manifold(s), sold separately	MFXP1, MFXP2, MFXP2R	7210009
Wash module. Includes pump, bottles, tubing and one 96/384 wash manifold. Other manifolds available, sold separately	MFXP2, MFXP2R	1260023
Automated Media Exchange (AMX) module. Includes secondary peristaltic pump module, AMX dispense and aspirate manifolds. Requires two AMX cassettes (Cat. No. 1260035), sold separately	MFXP2, For MFXP2R contact Customer Care	1260041
AMX components		
AMX tubing cassette	MFXP2, MFXP2R	1260035
AMX aspiration and dispense manifold set	MFXP2, MFXP2R	1260036
AMX dispense manifold only	MFXP2, MFXP2R	1260551S
AMX aspiration manifold only	MFXP2, MFXP2R	1260552S
Random Access Dispense (RAD) peristaltic pump cassettes		
0.5–50 µL 1 µL increment RAD cassette, plastic tips	MFXP2R	1260017
5–2500 µL 5 µL increment RAD cassette, plastic tips	MFXP2R	1260016
10–3000 µL 10 µL increment RAD cassette, plastic tips	MFXP2R	1260015
10–3000 µL 10 µL increment RAD cassette, large bore plastic tips	MFXP2R	1260020
0.5–50 µL 1 µL increment RAD cassette, stainless steel tips	MFXP2R	1260021
5–2500 µL 5 µL increment RAD cassette, stainless steel tips	MFXP2R	1260019
10–3000 µL 10 µL increment RAD cassette, stainless steel tips	MFXP2R	1260018
8-30000 µL 8-tube-to-1-tip RAD cassette, plastic tip	MFXP2R	1260022

Reagent dispenser: MultiFlo FX (cont.)

Description	Compatibility	Cat. No.
Wash manifolds		
Note: each manifold set includes an aspiration and dispense manifold. These manifolds are nonautoclavable		
Wash manifold for use with 6-well plate	MFXP2, MFXP2R (with wash module)	1260009
Wash manifold for use with 12-well plate	MFXP2, MFXP2R (with wash module)	1260010
Wash manifold for use with 24-well plate	MFXP2, MFXP2R (with wash module)	1260011
Wash manifold for use with 48-well plate	MFXP2, MFXP2R (with wash module)	1260012
Wash manifold for use with 96- or 384-well plate	MFXP2, MFXP2R (with wash module)	1260013
Direct drain waste system upgrade kit	MFXP2, MFXP2R (with wash module)	1260542
Syringe pump manifolds		
Note: requires syringe pump module, Cat. No. 7210008 (autoclavable) or Cat. No. 7210009 (nonautoclavable)		
Dispense manifold for use with 6-well plates, autoclavable	MFXP1, MFXP2, MFXP2R	1260537S
Dispense manifold for use with 12-well plates, autoclavable	MFXP1, MFXP2, MFXP2R	1260536S
Dispense manifold for use with 24-well plates, autoclavable	MFXP1, MFXP2, MFXP2R	1260535S
Dispense manifold for use with 48-well plates, autoclavable	MFXP1, MFXP2, MFXP2R	1260534S
Dispense manifold for use with 96- or 384-well plates, 1 x 16 array autoclavable	MFXP1, MFXP2, MFXP2R	7180543S
Dispense manifold for use with 96- or 384-well plates, 2 x 8 array autoclavable	MFXP1, MFXP2, MFXP2R	7180560S
Dispense manifold for use with 96- or 384-well plates, 2 x 8 array nonautoclavable	MFXP1, MFXP2, MFXP2R	7180548S
Dispense manifold for use with 1536-well plates, 1 x 32 array autoclavable	MFXP1, MFXP2, MFXP2R	7180552S
Dispense manifold for use with 1536-well plates, 1 x 32 array, small bore sapphire jeweled tips, autoclavable	MFXP1, MFXP2, MFXP2R	7180553S

Reagent dispenser: MicroFill



Agilent BioTek MicroFill microplate dispenser

Description	Compatibility	Cat. No.
Manifolds		
Manifold for use with 96 or 384 well plates, 1 x 16 array	MicroFill	7140508S
Manifold for use with half-area or PCR 96-well plates, 1 x 8 array	MicroFill	7140515S
Manifold for use with 24-well plates, 1 x 8 array	MicroFill	7140518S
Miscellaneous		
Stylus kit for wash manifold	MicroFill	2872304
Carriage holder for PCR microplates	MicroFill	6002076
Aerosol cover	MicroFill	4070517
Priming trough drain set	MicroFill	7140006

Reagent dispensers: bottles and tubing

Description	Compatibility	Cat. No.
Dispense bottle 1 L, autoclavable	MultiFlo FX, MicroFill	7140511
Dispense bottle 2 L	MultiFlo FX	4070515
Waste bottle 2 L, without cap	MultiFlo FX, 50TS	48140
Waste bottle 2 L, with level sense and tubing	MultiFlo FX	4070545S
Dispense bottle 4 L, with filter and tubing	MultiFlo FX, 50TS	4070076
Waste bottle 4 L, with tubing	MultiFlo FX	1260028
Waste bottle 4 L, with level sense and tubing	MultiFlo FX	1260027
Dispense tubing set	MicroFill	7140510
Dispense tubing set, FEP-lined, nonautoclavable	MicroFill	7140522
Dispense tubing set for use with 2 L bottle	MultiFlo FX	1263007
Waste tubing set for use with 2 L bottle	MultiFlo FX	1263001
Waste tubing set for use with 4 L bottle	MultiFlo FX	7100556

Syringe pump accessories

Description	Compatibility	Cat. No.
Dual syringe dispenser upgrade kit, autoclavable. Includes 1 x 16 dispense manifold	EL406, MultiFlo FX	7180006S
Syringe pump dispense tubing and check valve, autoclavable	EL406, MultiFlo FX	7183006
Syringe pump dispense tubing and check valve, organic solvent compatible, nonautoclavable	EL406, MultiFlo FX	7183002
Syringe pump dispense tubing and check valve, FEP-lined DMSO and acetonitrile compatible, nonautoclavable	EL406, MultiFlo FX	7180541
Syringe pump dispense tubing and check valve, organic solvent compatible, nonautoclavable	MicroFill	7140514
Automatic reagent switching module for dual syringe dispenser	EL406, MultiFlo FX	7180028
Syringe head plunger assembly, autoclavable	EL406, MultiFlo FX	7180046
Dispense manifold for use with 96-well plates, large bore, 1 x 8 array	EL406, MultiFlo FX	7180549S

Peristaltic pump accessories

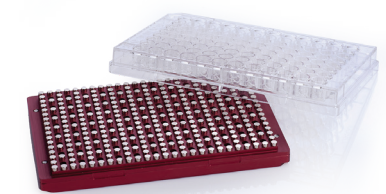
Description	Compatibility	Cat. No.
Dispense cassette		
0.5–50 µL, 1 µL increment, plastic tips	EL406, MultiFlo FX	7170012
5–2500 µL, 5 µL increment, plastic tips	EL406, MultiFlo FX	7170011
10–3000 µL, 10 µL increment, plastic tips	EL406, MultiFlo FX	7170010
5–2500 µL, 5 µL increment, large-bore plastic tips	EL406, MultiFlo FX	7170024
10–3000 µL, 10 µL increment, large-bore plastic tips	EL406, MultiFlo FX	7170023
0.5–50 µL, 1 µL increment, sapphire jeweled stainless steel tips	EL406, MultiFlo FX	7170015
5–2500 µL, 5 µL increment, stainless steel tips	EL406, MultiFlo FX	7170014
10–3000 µL, 10 µL increment, stainless steel tips	EL406, MultiFlo FX	7170013
0.5–50 µL, 1 µL increment, plastic tips, 1536-well compatible	EL406, MultiFlo FX	7170018
0.5–50 µL, 1 µL increment, sapphire jeweled stainless steel tips, 1536-well compatible	EL406, MultiFlo FX	7170016

Peristaltic pump accessories (cont.)

Description	Compatibility	Cat. No.
Replacement cassette tubing		
For use with 0.5–50 µL, 1 µL increment, plastic tip cassette	EL406, MultiFlo FX	7170009
For use with 5–2500 µL, 5 µL increment, plastic tip cassette	EL406, MultiFlo FX	7170008
For use with 10–3000 µL, 10 µL increment, plastic tip cassette	EL406, MultiFlo FX	7170007
For use with 5–2500 µL, 5 µL increment, large-bore plastic tip cassette	EL406, MultiFlo FX	7170026
For use with 10–3000 µL, 10 µL increment, large-bore plastic tip cassette	EL406, MultiFlo FX	7170025
Cassette tubing extension (Note: each tubing extension kit includes 8 stainless steel connectors)		
42 in extension for 1 µL increment tubing	EL406, MultiFlo FX	7170022
42 in extension for 5 µL increment tubing	EL406, MultiFlo FX	7170021
42 in extension for 10 µL increment tubing	EL406, MultiFlo FX	7170020
Miscellaneous		
Angled dispense kit for peristaltic pump	EL406	7180010
Large volume (40 mL) priming trough	EL406	7182109
Dispense reservoir holder	EL406, MultiFlo FX	7210509

Application-specific accessories

Description	Compatibility	Cat. No.
Magnetic separation		
96-well ring magnet. Beads pulled to 4-zone ring at well bottom	EL406, MultiFlo FX	7102216
384-well ring magnet. Beads pulled to 4-zone ring at well bottom	EL406, MultiFlo FX	7102215
96-well flat magnet. Beads pulled into band across flat-bottom well, and into center of U-bottom well	EL406, MultiFlo FX	7103016
384-well flat magnet. Beads pulled into band across flat-bottom well, and into center of U-bottom well	EL406, MultiFlo FX	7103017
MultiFloFX magnet adapter. For use with magnets 7102215, 7102216, 7103016 and 7103017	MultiFlo FX	1262063
EL406 magnet adapter	EL406	7180011
Vacuum separation		
96-well vacuum filtration kit. Includes filtration carrier, tubing set, regulator and accessories	405 TS/LS	1170008
96-/384-well vacuum filtration kit. Includes filtration carrier, tubing set, regulator and accessories	405 TS/LS	1170009
EL406 vacuum filtration module. Includes filtration carrier, tubing set, regulator and accessories	EL406	7180029
Sample tube handling		
Carrier for racked mini tubes (e.g. Corning 4411) up to 50 mm high	MultiFlo FX	7212042



Bead washing is available for 96- and 384-well microplates.

Learn more and buy online:

www.agilent.com/lifesciences/biotek

Get answers to your technical questions and
access resources in the Agilent Community:

community.agilent.com

U.S. and Canada

1-800-227-9770

agilent_inquiries@agilent.com

Europe

info_agilent@agilent.com

Asia Pacific

inquiry_lsca@agilent.com



DE44455.0170138889

This information is subject to change without notice.

© Agilent Technologies, Inc. 2021
Published in the USA, November 30, 2021
5994-2411EN

Distributed by Fisher Scientific. Contact us today:

In the United States

Order online: fishersci.com

Call customer service: 1-800-766-7000

In Canada

Order online: fishersci.ca

Call customer service: 1-800-234-7437

