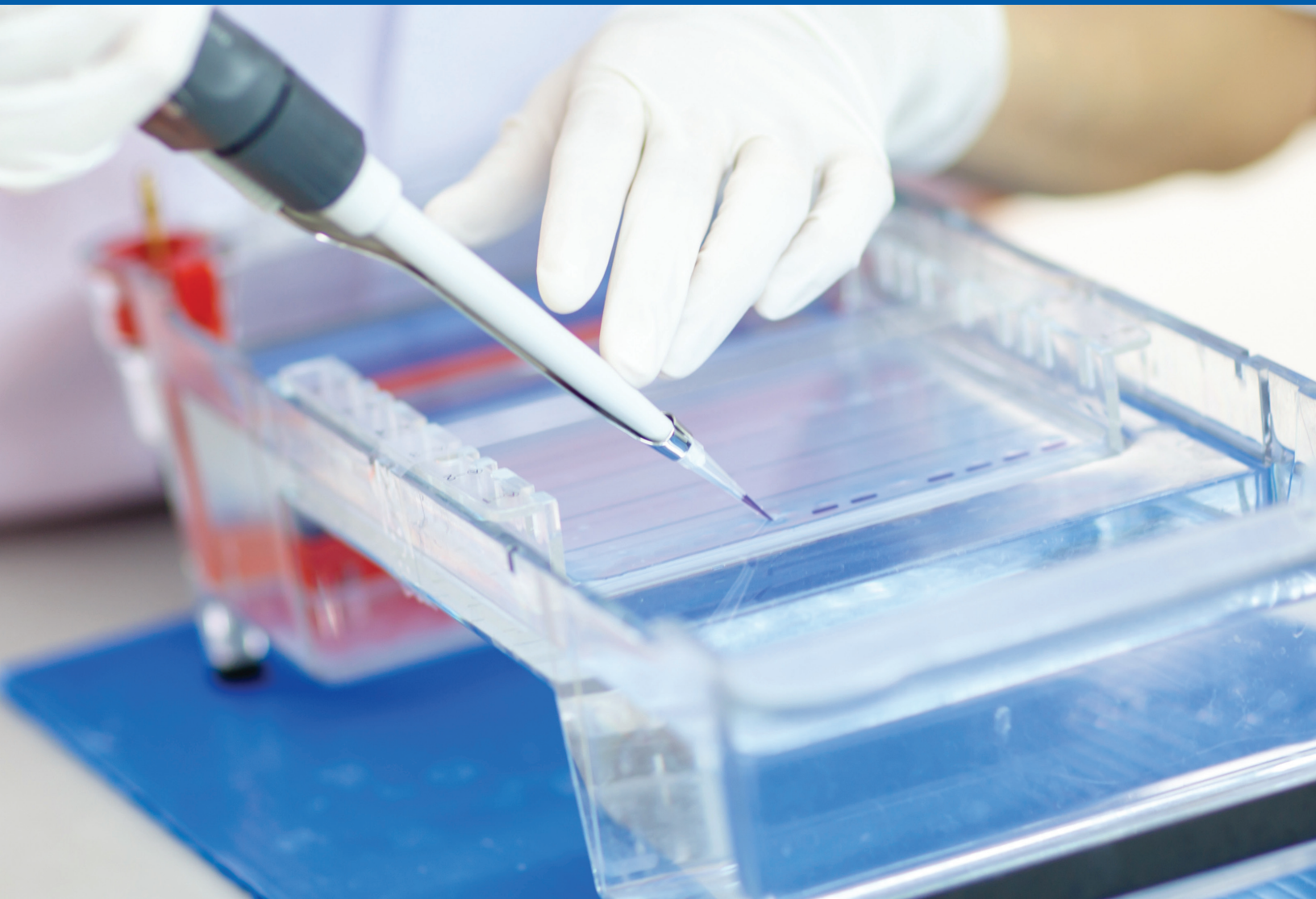


*fisherbrand*



# Electrophoresis Equipment

 **fisher scientific**  
part of Thermo Fisher Scientific

# Choice and Reliability at a Budget-Friendly Price

Fisherbrand™ electrophoresis products meet the demands of life sciences laboratories, with durable construction and dependable operation at an economical price. Browse our broad selection of products to see your options. Visit [fishersci.com](http://fishersci.com) or [fishersci.ca](http://fishersci.ca) to learn more.



## It's Our Promise

If one of our Fisherbrand products doesn't completely satisfy, we'll make it right. So buy it, try it, and if within 30 days you don't love it as much as we do, we'll give you your money back. Simply call our customer service team at +1 800-766-7000 to make a return.

# Horizontal Electrophoresis Systems



## Minigel Horizontal Electrophoresis Systems

Run up to 16 samples with the two double-sided combs (included): 6- and 10-tooth, 1mm/1.5mm thick.

Ideal for quick screening and provide easy, leak-free casting without tape, grease, or seals.

## Midigel Horizontal Electrophoresis Systems

Run up to 32 samples on a single gel with the four combs (included): 2 x 12-tooth and 2 x 20-tooth, 1.5mm thick.

Patented buffer recirculation feature prevents ionic depletion, keeps ionic gradients from distorting results, and prevents pH changes.

## Large Gel Horizontal Electrophoresis Systems

Run up to 36 samples with the four combs (included): 2 x 12-tooth and 2 x 20-tooth, 1.5mm thick.

Improved resolution for Northern and Southern blots using large gels and multiple samples. Also available with the self-contained buffer recirculation feature (as in the Midigel version).



## Wide-Format Horizontal Electrophoresis System

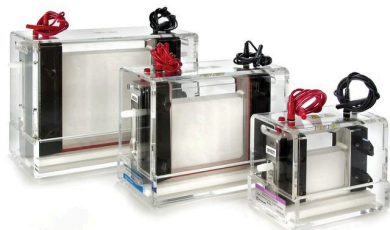
Run 25 to 250 samples simultaneously on a single gel with microwell-format combs (included): 5 x 50-tooth, 1.15mm thick. Load samples quickly and directly from a 96-well microplate (using a multichannel pipette).

Each horizontal electrophoresis system includes a buffer chamber, a safety lid with power cords, and a UVT gel tray with two gaskets.

Cat. No.	System Size	Gel Size	Buffer Volume	Type
FB-SB-710	Minigel	7 x 10cm	400mL	Standard
FB-SB-1316	Midigel	13 x 16cm	800mL	Standard
FB-SBR-1316	Midigel	13 x 16cm	1L	Recirculating
FB-SB-2025	Large Gel	20 x 25cm	2.3L	Standard
FB-SBR-2025	Large Gel	20 x 25cm	2L	Recirculating
FB-SB-2318	Wide Format	18 x 23cm	1.2L	Standard

May also be used with programmable power inverter for field inversion electrophoresis.

## Vertical Electrophoresis Systems

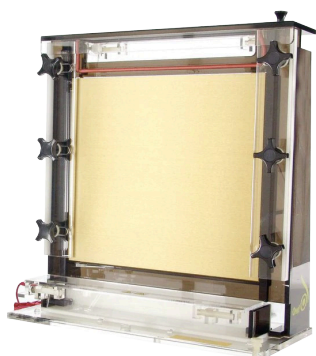


Each vertical electrophoresis system includes: upper and lower buffer chambers, a safety lid with power supply leads, a blocking plate for single gel operation, a gel caster, and a UVT gel tray with two gaskets.

- Double sided — run two protein gels simultaneously
- Sliding clamp assemblies make setup easy and prevent leaks
- Electrode configuration reduces run times
- Increased electrode surface area for better field uniformity

Cat. No.	Gel Size	Buffer Volume	Blank Glass Plates	Notched Glass Plates	Notched Alumina Plates	Spacers	Combs
FB-VE10-1	10 x 10cm	300mL	4 x 3/32 in.	2 x 3/32 in.	2 x 1mm	2 x 0.8mm	2 x 10-Tooth x 0.8mm
FB-VE16-1	16 x 14cm	550mL	4 x 1/8 in.	4 x 1/8 in.	N/A	2 x 1.5mm	2 x 10-Tooth x 1.5mm; 2 x 15-Tooth x 1.5mm
FB-VE20-1	20 x 20cm	1150mL	4 x 1/8 in.	4 x 1/8 in.	N/A	2 x 1.5mm	2 x 15-Tooth x 1.5mm; 2 x 20-Tooth x 1.5mm

## DNA Sequencing System



Run samples in all gel lanes without loss of data or questionable interpretation of the banding pattern.

Includes upper buffer chamber (removable drain bottle and built-in side clamps), removable lower buffer changer, safety interlocking lids with attached power cords, blank glass plates (2), notched glass plates (2), sharktooth combs (2), well comb (1), side spacers (2), bottom spacer (1), and adhesive temperature indicator.

Cat. No.	Gel Size	Chamber Size	Quantity
FB-SEQ-3545	33 x 42cm	35 x 45cm	800mL

## Semi-Dry Blotting Apparatus



Sleek, low-profile system for fast Western transfers with efficiencies of nearly 90%.

- Transfers proteins from polyacrylamide electrophoresis gels onto hybridization membranes (Western transfers)
- Transfers minigels in 15 to 30 minutes, and full-sized gels in 30 to 60 minutes
- Ideal for membrane-based, solid-phase protein assays
- Detect trace proteins and study protein interactions with other molecules

Includes base with stainless-steel cathode, lid with platinum/titanium anode, attached pair of power supply leads, and three knobs.

Cat. No.	Transfer Area	Buffer Volume
FB-SDB-2020	20 x 20cm	250mL



# Gel Combs



Find the right combs for your gel-casting requirements.

## Combs for Horizontal Gel Systems

For 7 x 10cm Gels			For 20 x 25cm Gels		
5-Tooth Comb	1mm Thick	1.5mm Thick	Comb Type	1mm Thick	1.5mm Thick
	FB-SB-733	FB-SB-734	8 Tooth	FB-SB-2534	FB-SB-2535
For 13 x 16cm Gels			12 Tooth	FB-SB-2536	FB-SB-2537
Comb Type	1mm Thick	1.5mm Thick	16 Tooth	FB-SB-2538	FB-SB-2539
8 Tooth	FB-SB-1324	FB-SB-1325	20 Tooth	FB-SB-2540	FB-SB-2541
12 Tooth	FB-SB-1326	FB-SB-1327	24 Tooth	FB-SB-2542	FB-SB-2543
16 Tooth	FB-SB-1328	FB-SB-1329	28 Tooth	FB-SB-2544	FB-SB-2545
20 Tooth	FB-SB-1330	FB-SB-1331	32 Tooth	FB-SB-2546	FB-SB-2547
24 Tooth	FB-SB-1332	FB-SB-1333	36 Tooth	FB-SB-2548	FB-SB-2549
Prep/Marker Comb	FB-SB-1336	—	42 Tooth	FB-SB-2552	FB-SB-2553
Wall Comb	FB-SB-1337	—	Prep/Marker Comb	FB-SB-2554	—
Microplate Format	FB-SB-1334	FB-SB-1335	Wall Comb	FB-SB-2555	—
—	—	—	Microplate Format	FB-SB-2550	FB-SB-2551

## Combs for Vertical Gel Systems

For 10 x 10cm Gels				For 16 x 14cm Gels			For 20 x 20cm Gels	
Comb Type	0.5mm Thick	0.8mm Thick	1.5mm Thick	Comb Type	0.8mm Thick	1.5mm Thick	0.8mm Thick	1.5mm Thick
6 Tooth	FB-VE10-16	FB-VE10-17	FB-VE10-18	10 Tooth	FB-VE16-17	FB-VE16-18	FB-VE20-14	FB-VE20-15
8 Tooth	—	FB-VE10-20		15 Tooth	FB-VE16-19	FB-VE16-20	FB-VE20-16	FB-VE20-17
10 Tooth	FB-VE10-22	FB-VE10-23	FB-VE10-24	20 Tooth	FB-VE16-21	FB-VE16-22	FB-VE20-18	FB-VE20-19
12 Tooth	FB-VE10-25	FB-VE10-26	FB-VE10-27	24 Tooth	FB-VE16-23	FB-VE16-24	—	—
15 Tooth	FB-VE10-28	—	—	25 Tooth	—	—	FB-VE20-20	FB-VE20-21
20 Tooth	FB-VE10-29	—	—	Prep/Marker	FB-VE16-27	—	FB-VE20-24	—

# Electrophoresis Power Supplies

Easy-to-use power supplies are designed for safe operation.



## Compact Model FB300Q

Ideal for SDS-PAGE, DGGE/CDGE, and DNA/RNA submarine electrophoresis.



## High-Current Model FB200Q

Perfect for high-current electroblotting (Western tank and semi-dry, Southern and Northern) and SDS-PAGE applications.



## Programmable Models FB1000Q and FB3000Q

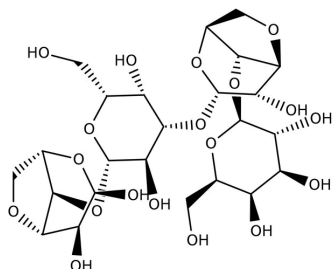
Nine-program memory makes these units ideal for multi-user labs or multiple repetitive operations.

- FB1000Q is designed for isoelectric focusing, SDS-PAGE, and native SDS-PAGE
- FB3000Q is ideal for DNA sequencing and high-voltage electrophoresis applications

Cat. No.	Type	Dimensions (L x W x H)	Maximum Voltage/Current/Power	Jacks	Modes	Timer
FB300Q	Compact	(10.25 x 5.5 x 5.25 in.)	300V/400mA/75w	3	Voltage or Current	0-999 min.
FB200Q	High Current	(12 x 10.75 x 5.25 in.)	200V/2.0A/200w	4	Voltage or Current	99 hr. 59 min.
FB1000Q	Programmable	(12 x 10.75 x 5.25 in.)	1000V/500mA/250w	4	Voltage or Current	99 hr. 59 min.
FB3000Q	Programmable	(12 x 10.75 x 5.25 in.)	3000V/400mA/400w	4	Voltage or Current	99 hr. 59 min.

May also be used with programmable power inverter for field inversion electrophoresis.

# Electrophoresis Reagents



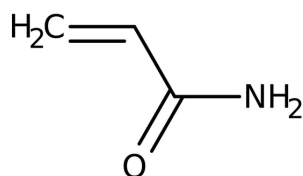
## Agarose

This agarose formulation is ideal for separations of DNA/RNA from 500bp to 25kb.

Cat. No.	Description	Quantity
BP1356-100	Agarose, Broad Separation Range, Genetic Analysis Grade	100g
BP1356-500		500g

Agarose Low-EEO is an all-purpose powder for nucleic acid preparative work, blotting, and routine applications.

Cat. No.	Description	Quantity
BP160-100	Agarose, Low-EEO, Molecular Biology Grade	100g
BP160-500		500g



## Acrylamide

This Acrylamide solution is premixed for 5% cross-linking, and is suitable for DNA sequencing and low-molecular-weight protein separations.

Cat. No.	Description	Quantity
BP1406-1	Bis-Acrylamide 19:1 Solution, 40%, Electrophoresis Grade	1L

This Acrylamide solution is premixed for 3.3% cross-linking, and can be used for DNA sequencing and protein separations.

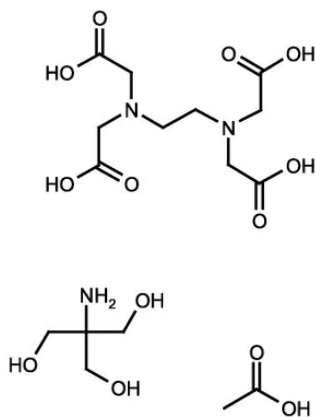
Cat. No.	Description	Quantity
BP1408-1	Bis-Acrylamide 29:1 Solution, 40%, Electrophoresis Grade	1L

This Acrylamide solution is premixed for 2.6% cross-linking and for separating high-molecular-weight proteins.

Cat. No.	Description	Quantity
BP14101	Bis-Acrylamide 37.5:1 Solution, 40%, Electrophoresis Grade	1L



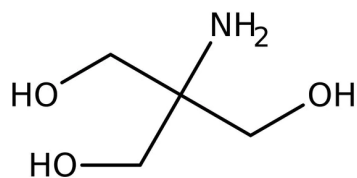
## Buffers



These Tris-Acetate-EDTA (TAE) and Tris-Borate-EDTA (TBE) buffers for nucleic acid electrophoresis are DNase-, RNase-, and Protease-free.

Cat. No.	Description	Size
BP1332-500	TAE Buffer, 50X	500mL
BP1332-1		1L
BP1332-4		4L
BP1332-20		20L
BP1333-1		TBE Buffer, 10X
BP1333-4	4L	
BP1333-20	20L	

Tris hydrochloride is a common buffer for molecular biology, tissue culture, and electrophoresis procedures.



Cat. No.	Description	Size
BP1756-100	Tris Hydrochloride, 1M, pH 7.0	100mL
BP1756-500		500mL
BP1757-100	Tris Hydrochloride, 1M, pH 7.5	100mL
BP1757-500		500mL
BP1758-100	Tris Hydrochloride, 1M, pH 8.0	100mL
BP1758-500		500mL

Visit [fishersci.com](http://fishersci.com) or [fishersci.ca](http://fishersci.ca) to learn more.

### In the United States:

For customer service, call 1-800-766-7000  
 To fax an order, use 1-800-926-1166  
 To order online: [fishersci.com](http://fishersci.com)

### In Canada:

For customer service, call 1-800-234-7437  
 To fax an order, use 1-800-463-2996  
 To order online: [fishersci.ca](http://fishersci.ca)

