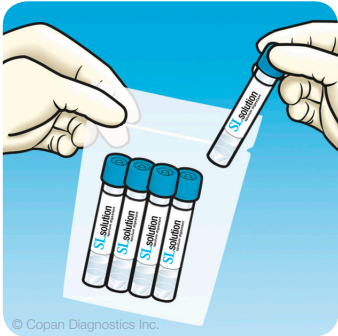
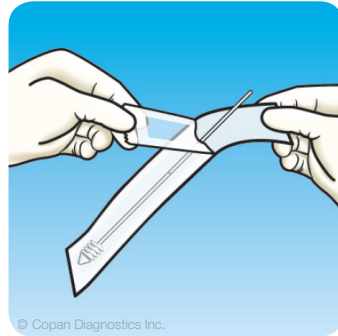


SNOTBUSTER™ HOW TO GUIDE



- 1 Remove one SLSolution tube from the plastic package.



- 2 Peel open the sterile Sputum Dipper™ pouch and remove the device.



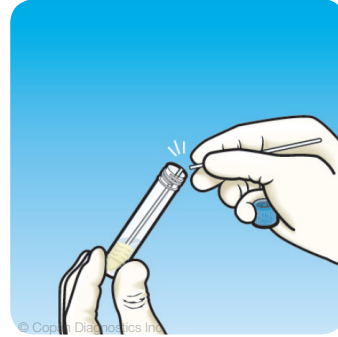
- 3 Insert the Sputum Dipper™ into the container of sputum specimen.



- 4 Completely submerge and rotate the drill-shaped head of the Sputum Dipper™ in the sample for approximately 10 seconds ensuring the plastic coils of the dipper are filled up with sputum sample. If necessary angle the Sputum Dipper™ and tilt the sputum container to ensure the dipper is filled with sample.



- 5 Remove the cap from the SLSolution tube and place the Sputum Dipper™ into the tube.



- 6 Place the Sputum Dipper™ into the SLSolution tube and break the shaft at the pre-molded breakpoint.



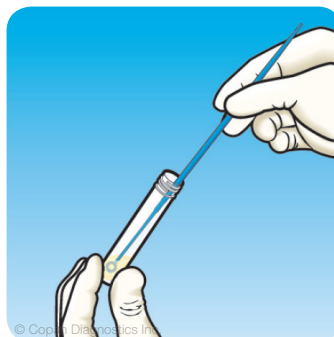
- 7 Re-cap the SLSolution tube.



- 8 Vortex the SLSolution tube for 30 seconds at 2000-2500 RPM.



- 9 Leave at room temperature for 15 minutes.
Note: Prolonged time (up to six hours) will not inhibit bacteria and fungi survival in the sample).



- 10 Unscrew the cap of the SLSolution tube and aseptically remove an aliquot using a sterile loop. Plant onto appropriate culture medium for the isolation of bacteria and fungi.

Copan Diagnostics Inc.

26055 Jefferson Ave.
Murrieta, California 92562 USA

Toll Free: (800) 216-4016
(US & Canada)

Phone: (951) 696-6957

Fax: (951) 600-1832

E-Mail: info@copanusa.com

www.copanusa.com